

Access MATC Applications (via VMware View)

Remote access to MATC applications is provided by our VMware View virtual desktop system.

You can connect to different "pools" of virtual machines, based on your needs and entitlements, from many internet connectable devices.

This document pertains to the client use. If you need to install the client you will need to refer to the document called [“Access MATC Applications \(via VMware View\) Client Install Instructions”](#)

You can connect to your desktop and applications by using the VMware Horizon View Client, or to your desktop through the browser. The VMware Horizon View Client offers better performance and features.

Desktop icon log on.

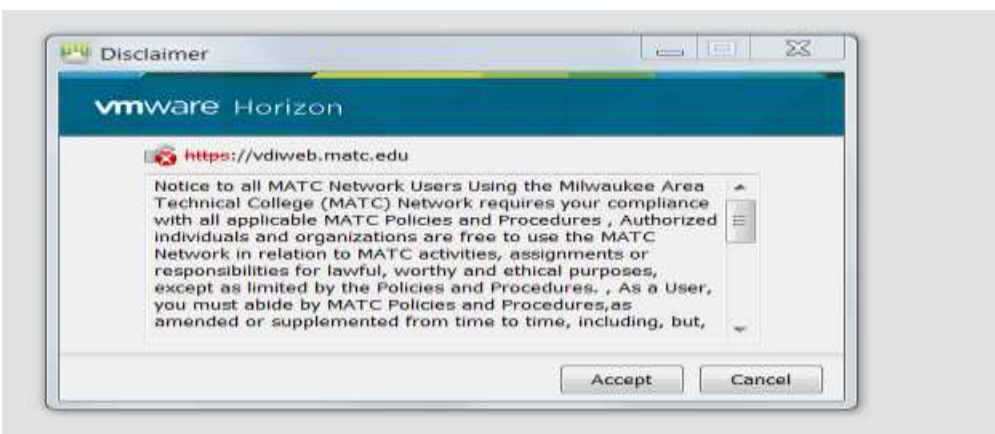
Click on the icon.



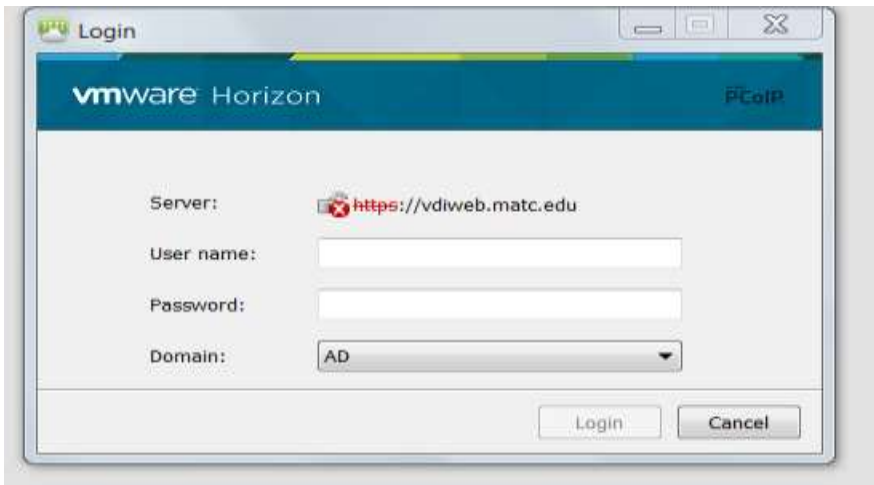
The next screen you will see will be link to MATC Desktop Pools: click on the cloud link.



Accept the disclaimer.



You will be directed to the Login Screen. Enter your MATC id (user name) and password.



This will authenticate you and provide you with the desktops available to you.

Click on the desktop that you would like to log into.

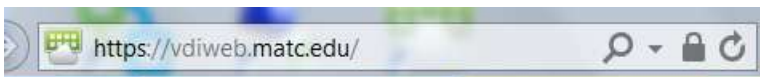


HTML Access – is more like a kiosk mode client connection

The HTML client has limitations. Think of this client like a Kiosk client. There is no local drive access, no local printer access, no thumb drive / cd access, no protocol selection and use of only one desktop. (You cannot switch desktops like you can when using the View Client)

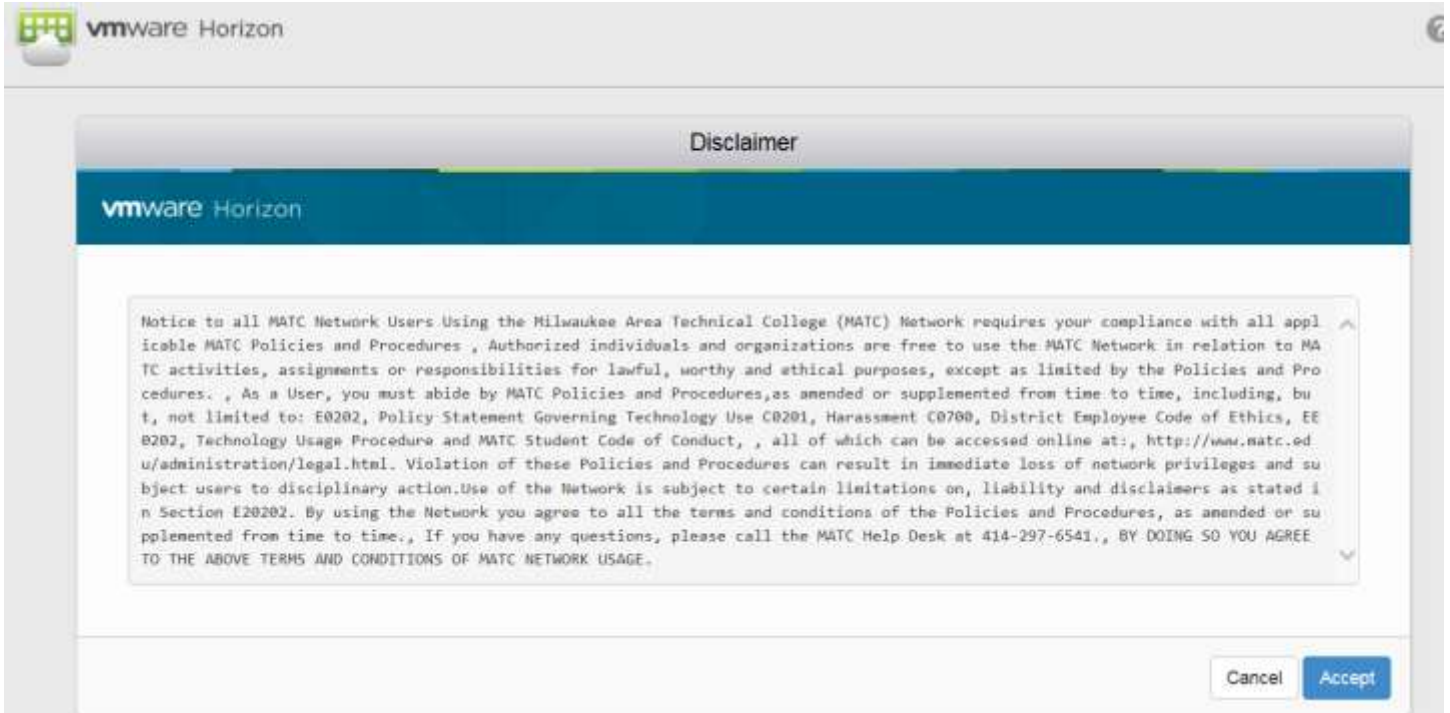
Logging in with the Blast – HTML client

At your browser type <http://vdiweb.matc.edu>





Select the HTML Access by clicking on the icon



The next screen you will see is the Disclaimer screen. Click on Accept.

Log In

vmware Horizon

Username:

This field is required.

Password:

Domain: ▼

Enter your username and password, Sign In.



Select the desktop that you wish to log into.