

August 13, 2010

NOTICE TO RESIDENTS OF THE MILWAUKEE AREA  
TECHNICAL COLLEGE DISTRICT, WISCONSIN

A regular open meeting of the **EDUCATION, SERVICES, AND INSTITUTIONAL RELATIONS COMMITTEE** of the Milwaukee Area Technical College District Board, Wisconsin, will be held in the **BOARD ROOM (ROOM M210)** of the **MILWAUKEE AREA TECHNICAL COLLEGE**, 700 West State Street, Milwaukee, Wisconsin on **Tuesday, August 17, 2010**, beginning at **5:00 P.M.\***

The agenda for said meeting is presented as follows:

**A. Roll Call**

**B. Compliance with the Open Meetings Law**

**C. Approval of Minutes – June 16, 2010 - Attachment 1**

**D. Comments from the Public**

**E. Action Items**

1. Tentative Meeting Schedule – Attachment 2

**F. Discussion Items**

1. Program Quality Review:
  - a. Accounting – Attachment 3
  - b. Computerized Accounting Assistant – Attachment 4
  - c. Logistics – Attachment 5
2. Policy Review – Policy J0200 – Milwaukee Area Technical College Foundation Inc. – Attachment 6
3. Quarterly Advisory Committee Report – Attachment 7

**G. Information Items**

1. Enrollment/Deregistration Update
2. Transfer Update

**H. Miscellaneous Items**

1. Communications and Petitions
2. Information Items

**I. Old Business/New Business**

1. Date of Next Meeting: **September 20, 2010  
Board Room (M210)  
Milwaukee Campus**

Committee Members: Baker, Katz, Webber

\* **Other members of the MATC Board may be present, although they will not be participating as members of this committee. This meeting may be conducted in part by telephone. Telephone speakers will be available to allow the public to hear those parts of the proceedings that are open to the public.**

\*\* **Action may be taken on any agenda item, whether designated as an action item or not. Agenda items may be moved into Closed Session for discussion when it becomes apparent that a Closed Session is appropriate under Section 19.85 of the Wisconsin Statutes. The Board may return into Open Session to take action on any item discussed in Closed Session.**

*Reasonable accommodations are available through the ADA Office for individuals who need assistance. Please call 414-297-6221 to schedule services at least 48 hours prior to the meeting.*



## Attachment ESIR - 1

### MILWAUKEE AREA TECHNICAL COLLEGE DISTRICT BOARD EDUCATION, SERVICES, AND INSTITUTIONAL RELATIONS June 16, 2010

#### CALL TO ORDER

The regular monthly meeting of the Education, Services, and Institutional Relations Committee of the Milwaukee Area Technical College District Board was held in open session on Wednesday, June 16, 2010, and called to order by Ms. Melanie Holmes at 3:02 p.m. in the Board Room, Room M210, at the Milwaukee Campus of Milwaukee Area Technical College.

#### ITEM A: ROLL CALL

**Present:** Ms. Melanie Holmes and Mr. Bobbie Webber (*arrived at 3:04 p.m.*)  
**Excused:** Mr. Thomas Michalski

#### ITEM B: COMPLIANCE WITH THE OPEN MEETINGS LAW

The Education, Services, and Institutional Relations Committee meeting was noticed in compliance with the Wisconsin Open Meetings Law.

#### ITEM C: APPROVAL OF MINUTES – May 19, 2010 – Attachment 1

Motion: The minutes were approved by consensus as presented.

#### ITEM D: COMMENTS FROM THE PUBLIC

#### ITEM E: ACTION ITEMS

**E-1** Resolution to Approve the Scope Proposal for New Program Titled Human Resources (10-196-4) – Attachment 2

Discussion Mr. Mike Jenkins, manager, Curriculum, requested that the ESIR Committee grant Administration the permission to demonstrate need for an academic program in Human Resources.

*Mr. Webber arrived at 3:04 p.m.*

Motion It was moved by Mr. Webber, seconded by Ms. Holmes, to approve Resolution to Approve the Scope Proposal for New Program Titled Human Resources (10-196-4).

Action Motion approved

#### ITEM F: DISCUSSION ITEMS

**F-1** Wisconsin Transfer Equity Study Update – Attachment 3

**Education, Services, and Institutional Relations**

**Minutes of June 16, 2010**

**Page 2**

Discussion Ms. Barbara Cannell, Interim Associate Provost, provided a status report on progress made relative to MATC's participation in a Wisconsin Transfer Equitability Study supported by the University of Southern California and Center for Urban Education. Preliminary analysis suggests that fewer students than expected partake in transfer opportunities. Ms. Cannell will present a final report at the August meeting of the ESIR Committee. Mr. Webber and Ms. Holmes requested that the final report clarify significance of degree completion in articulation agreements.

**ITEM G: INFORMATION ITEMS**

**G-1 Enrollment Update**

Discussion: Mr. Al Pinckney, Interim Vice President, Student Services, reported that overall summer 2010 full-time enrollments are up 14.5%.

**G-2 Quality Review Process (QRP) Schedule for FY2010-11 – Attachment 4**

**ITEM H: MISCELLANEOUS ITEMS**

**H-1 Communications and Petitions**

None

**H-2 Information Items**

None

**ITEM I: OLD BUSINESS/NEW BUSINESS –**

Date of Next Meeting, TBD

Milwaukee Campus, Board Room (M210)

**ADJOURNMENT**

The Committee adjourned at 3:26 p.m.

Respectfully submitted,

*Karen M. Esche-Eiff*

Karen M. Esche-Eiff  
Administrative Specialist - Finance

**Attachment ESIR - 2**

**Tentative FY2011-2011  
Education, Services, and Institutional Relations Committee  
Meeting Schedule**

**All meetings will begin at 5:00 p.m.**

**ESIR Meeting Schedule**

Tuesday, August 17, 2010  
Monday, September 20, 2010  
Monday, October 18, 2010  
Monday, November 15, 2010  
Monday, December 20, 2010  
Tuesday, January 18, 2011\*  
Monday, February 14, 2011  
Monday, March 14, 2011  
Monday, April 18, 2011  
Monday, May 16, 2011  
Monday, June 20, 2011

**Board Meeting Schedule**

Tuesday, August 24, 2010  
Tuesday, September 28, 2010  
Tuesday, October 26, 2010  
Tuesday, November 23, 2010  
Tuesday, December 28, 2010  
Tuesday, January 25, 2011  
Tuesday, February 22, 2011  
Tuesday, March 22, 2011  
Tuesday, April 26, 2011  
Tuesday, May 24, 2011  
Tuesday, June 28, 2011

\* Monday, January 17, 2011 is MLK Day. School Closed

## ***Attachment ESIR - 3***

### ***QUALITY REVIEW PROCESS***

#### ***PROGRAM PROFILE***

##### ***Accounting (10-101-1)***

This Associate Degree program went through a quality review process during the 2009 academic year. The internal program quality review team was comprised of Katherine Collins and Tammy Metzke.

The Accounting program is an associate degree program designed to prepare students with basic accounting skills. Specialized areas of the accounting profession – auditing, cost, taxes, governmental nonprofit and computerized accounting – are included in this program.

Client Reporting Data was provided to reviewers from FY2005 to FY2009. Selected data are reviewed below.

#### ***Demographics for FY 2009:***

1. During FY2009, 571 students were enrolled in the program. This number is slightly lower than the five-year average enrollment of 576 students. Of all those enrolled in 2008, 80.2% were part-time students.
2. The program generated 279.5 FTEs during FY2009. FTEs increased by 5.6% from FY2008 and were 5.3% lower than FY2005 (295). The program reached its peak enrollment during the five-year period in FY2005 at 295 FTEs.
3. Males were 27.7% and females were 72.3% of the FY2009 enrollment. This gender ratio was relatively constant during the five-year period with an average NTO male enrollment of 25.3%.
4. Program enrollments for FY2009 included 226 minority students (40%). The percentage of minority enrollment for FY2009 was 3.7% higher than the five-year average (36.3%) for the program.

### **Course Completion and Other Selected Outcomes for FY 2009:**

1. The course completion rate for these programs in face-to-face sections was 72.1% for FY2009. The course completion rate for these programs in alternative delivery sections was 62% for FY2009.
2. The graduation index is calculated by dividing the number of graduates in FY2009 by the number of students enrolled in the program code that same year. The annual graduation index for this program for FY2009 was 14.4% or 82 of the 571 students enrolled.
3. Employment and wage data for this program were available for FY2009, when MATC graduate employment reports show that the annual median wage for program graduates was \$30,262.96.
4. The *Graduate Employment Report* reported statewide the projected demand was for 451 positions.



# Action Plan

back to program page

Based on the Probable Actions Selections, develop an action plan for improvement. Select at least three actions related to three unique indicators that your department will initiate in the next year to improve performance. Develop one or more objectives with related activities for each.

Program Name	College Division	Advisory Committee Review Date
Accounting	BUSINESS, GRAPHIC ARTS & INFORMATION TECHNOLOGY	11/1/2007

Indicator Name	Third Year Retention
Action Item	Provide students with a better understanding of the expectations of the program requirements and a realistic view of the accounting field.
Planned Outcome:	Revise and improve program descriptive material provided to prospective students, community and counselors in an effort to provide accurate information about the program and the accounting field.
Activity 1:	Modify catalog page description
Person Responsible	Tammy Metzke
Resource Needs	
Timeline:	2012 catalog year
Activity 2:	Provide information to counselors
Person Responsible	Department
Resource Needs	
Timeline:	2011
Activity 3:	Faculty will share this information with students during class and advising
Person Responsible	Department
Resource Needs	
Timeline:	Ongoing

Indicator Name	Third Year Retention
Action	Increase the number of hours of tutoring provided by full-time faculty.

Item	
Planned Outcome:	Improve student success rates.
Activity 1:	Development of a dedicated Accounting Lab/classroom to be located at the West Allis Campus to allow students access to full-time faculty assistance throughout the day. This lab/classroom will have computer technology and software relevant to Accounting applications, state-of-the-art AV equipment, space for group tutoring, etc. This facility will be staffed by full-time faculty during office and other hours to provide students with assistance in tutoring, test monitoring, etc.
Person Responsible	Department
Resource Needs	\$90,000
Timeline:	2011

Indicator Name	Course Completion
Action Item	Promote faculty advising in the classroom to allow for intervention as necessary.
Planned Outcome:	Students will take classes in the correct sequence and delivery format enhancing their chance for success. Students can also be identified who are more appropriately suited for other occupational areas.
Activity 1:	Department will identify a week to promote faculty advising.
Person Responsible	Department
Resource Needs	
Timeline:	Ongoing

Indicator Name	Fifth Year Graduation
Action Item	Assist students in developing individual program completion date. During faculty advising, faculty are able to assist students in identifying a plan for addressing student barriers to successful program completion.
Planned Outcome:	Providing students with the necessary resources so they are able to successfully complete the program.
Activity 1:	Department will identify a week to promote faculty advising.
Person Responsible	Department
Resource Needs	
Timeline:	Ongoing.

Indicator Name	Communicate Effectively
Action Item	Encourage faculty to assign oral and written assignments in class in addition to the accounting work assigned.

Planned Outcome:	Students will develop the soft skills necessary for today's work environment.
Activity 1:	Faculty will develop a plan to implement oral and written assignments in the classes where they are deemed to be most appropriate.
Person Responsible:	Department
Resource Needs:	
Timeline:	Ongoing
Activity 2:	Department will invite outside speakers at various times to speak of the importance of soft skills in addition to their technical knowledge
Person Responsible:	Department
Resource Needs:	
Timeline:	Ongoing

Indicator Name	Utilize Technology
Action Item	Develop and implement computer skill assessment tool for students entering the program.
Planned Outcome:	Students can be directed to the appropriate level and training, and therefore, will be better prepared to use the technology needed to complete the required coursework.
Activity 1:	Department will develop a computer assessment tool in an effort to determine students' level of proficiency with regards to technology
Person Responsible:	Department
Resource Needs:	
Timeline:	Fall 2011
Activity 2:	Department will implement the computer assessment tool developed in Fall 2011.
Person Responsible:	Department
Resource Needs:	
Timeline:	Ongoing

**Quality Review Process  
Scorecard  
FY2009**

10-101-1

**ACCOUNTING**

<b>State Indicators</b>	Actual Performance FY2009	Threshold Performance Average of 4 lowest in the State	Target Performance Average of 4 highest in the State
Course Completion	54.48	55.35	71.23
Special Populations Course Completion	49.24	52.93	69.82
Minority Course Completion	44.28	20.62	69.11
Second Year Retention	60.25	53.46	65.20
Third Year Retention	42.91	34.14	54.27
Third Year Graduation	17.41	14.96	33.80
Fifth Year Graduation	19.92	22.74	42.97
Job Placement - All Employment	88.24	83.41	96.50
Job Placement - Related Employment	70.59	55.45	81.44
Non-Traditional Gender	0.00	0.00	0.00

<b>MATC Indicators</b>	Actual Performance FY2009	Threshold Performance	Target Performance
	Score	Score	Score
<b>1) Student Outcomes Assessment</b>	6.00	2.00	6.00
<b>2) Program Currency</b>	4.86	3.72	4.94
<b>3) Core Ability Attainment:</b>			
<b>Communicate Effectively</b>	3.50	3.46	4.41
<b>Collaborate with Others</b>	3.40	3.35	4.70
<b>Respect Diversity</b>	3.30	3.43	4.69
<b>Demonstrate Responsibility</b>	3.69	3.58	4.65
<b>Think Critically</b>	3.70	3.50	4.67
<b>Utilize Technology</b>	3.98	3.45	4.59
<b>Apply Math and Science</b>	3.68	2.94	4.26
<b>4) Student Satisfaction Attainment</b>	4.40	3.67	4.90
<b>5) Employer Satisfaction Attainment</b>	0.00	3.38	4.34
<b>6) Program Indicator 1</b>	N/A	N/A	N/A
<b>7) Program Indicator 2</b>	N/A	N/A	N/A

Footnotes:

Targets will be set in consultation with each program area or will be consistent with college-wide percent increase in FTEs

- 1) Actual = Source is Student Outcomes Assessment administered by MATC.  
Threshold = avg of all responding MATC programs, Target = avg of four highest performing MATC programs
- 2) Actual = Source is Program Currency Assessment administered by MATC.  
Threshold = avg of all responding MATC programs, Target = avg of four highest performing MATC programs
- 3) Actual = Source is Core Abilities Assessment administered by MATC.  
Threshold = avg of all responding MATC programs, Target = avg of four highest performing MATC programs
- 4) Actual = Source is Student Satisfaction Survey administered by MATC.  
Threshold = avg of all responding MATC programs, Target = avg of four highest performing MATC programs
- 5) Actual = Source is Employer Satisfaction Survey administered by MATC.  
Threshold = avg of all responding MATC programs, Target = avg of four highest performing MATC programs

**Quality Review Process  
Scorecard  
FY2009**

10-101-1  
ACCOUNTING

	FY2005		FY2006		FY2007		FY2008		FY2009	
	N	%	N	%	N	%	N	%	N	%
<b>1) Program Enrollment: Headcount<sup>(1)</sup></b>	597		576		583		554		571	
Full-Time	120	20.1	125	21.7	112	19.2	96	17.3	113	19.8
Part-Time	477	79.9	451	78.3	471	80.8	458	82.7	458	80.2
<b>2) Program Enrollment: FTEs<sup>(1)</sup></b>	295.0		288.0		280.1		264.5		279.5	
<b>3) Graduation<sup>(1)</sup></b>	84	14.1	69	12.0	71	12.2	61	11.0	82	14.4
<b>4) Racial/Ethnic Minority Students<sup>(1)</sup></b>	213	35.7	201	34.9	202	34.6	203	36.6	211	37.0
<b>5) Section Completion Rate<sup>(1)</sup></b>										
Traditional Delivery Total Enrollment	1543		1402		1396		1291		1350	
Pass	1228	79.6	1059	75.5	608	43.6	942	73.0	973	72.1
Non-Pass	118	7.6	104	7.4	51	3.7	72	5.6	176	13.0
Other	197	12.8	239	17.0	737	52.8	209	16.2	201	14.9
Alternative Delivery Total Enrollment	385		426		451		670		731	
Pass	246	63.9	279	65.5	164	36.4	402	60.0	453	62.0
Non-Pass	35	9.1	39	9.2	18	4.0	41	6.1	107	14.6
Other	104	27.0	108	25.4	269	59.6	167	24.9	171	23.4

Footnotes:

N/A = Not Available

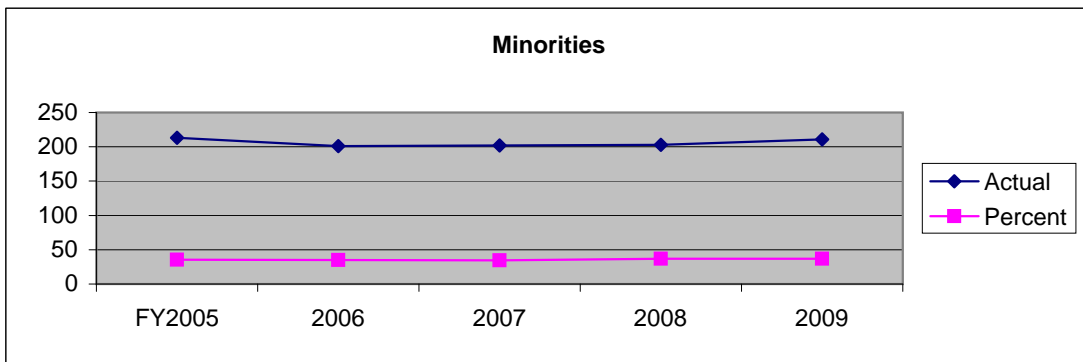
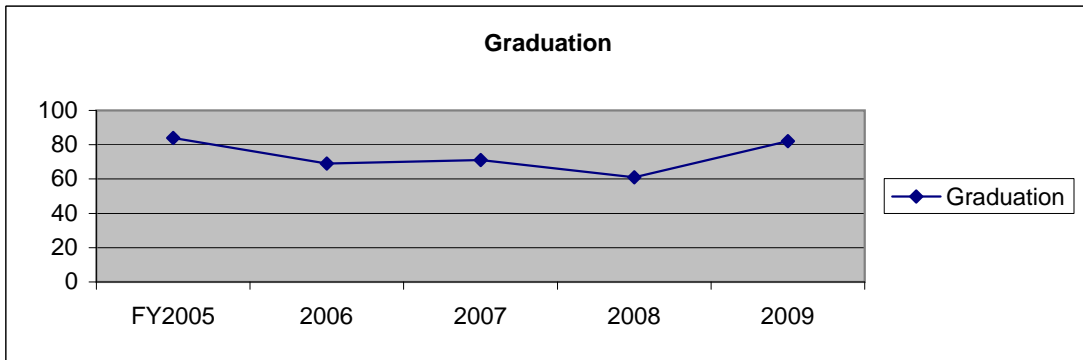
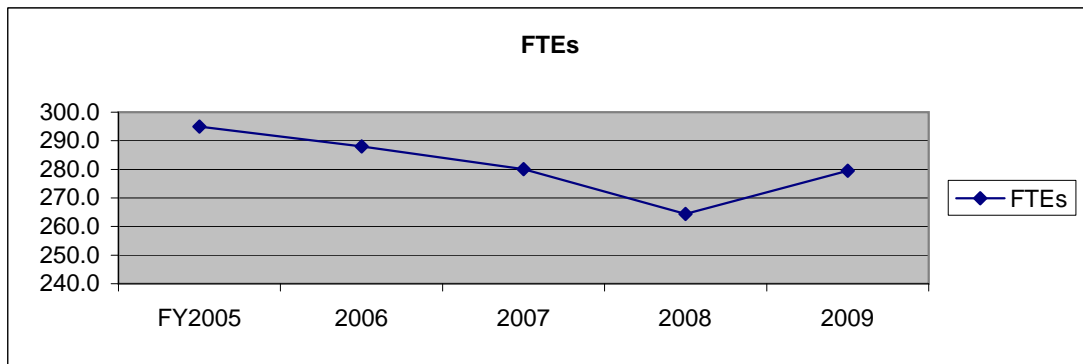
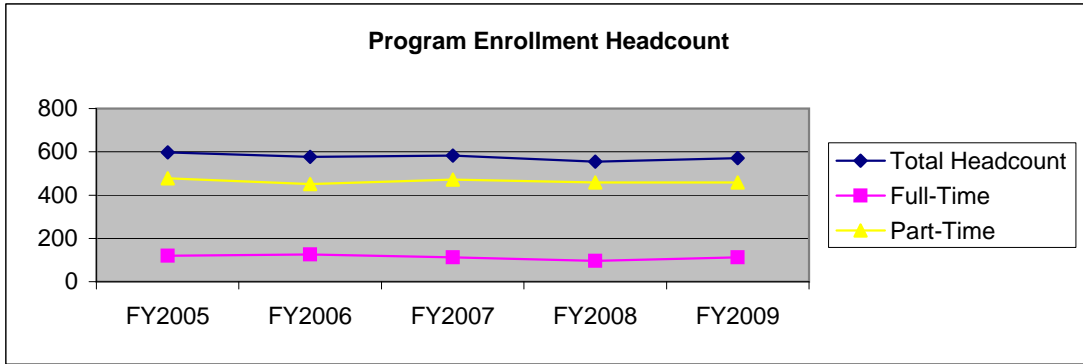
<sup>(1)</sup> Source is State Report VE215330. Racial/Ethnic minorities include Black/African American, Hispanic, Asian or Pacific Islander and Native American  
Graduation counts include those entered on COSMO by the closing of Client Reporting and with a graduation date within the year being reported  
Also included are those who met requirements for graduation but chose not to apply for graduation.

<sup>(1)</sup> Source is COSMO. These are the course completion rates of students in both traditional and alternative delivery sections  
with the same department as the department of the program. Pass: C or better, AU and P. Non-Pass: U. Other: W, Uw, I, IP and no grade.

**Note: Prior to 2008, a passing grade was D- or better.**

# Quality Review Process Scorecard FY2009

10-101-1  
ACCOUNTING



**Quality Review Process  
Scorecard  
FY2009**

10-101-1

**ACCOUNTING**

	FY2005		FY2006		FY2007		FY2008		FY2009	
	N	%	N	%	N	%	N	%	N	%
<b>ENROLLMENT<sup>(1)</sup></b>										
Total	597		576		583		554		571	
<b>GENDER<sup>(1)(2)</sup></b>										
Male	143	24.0	147	25.5	153	26.2	129	23.3	158	27.7
Female	454	76.0	429	74.5	430	73.8	425	76.7	413	72.3
N/A	0	*	0	*	0	*	0	*	0	*
<b>ETHNICITY<sup>(1)(3)(5)</sup></b>										
Indian	12	2.1	12	2.1	9	1.6	7	1.3	8	1.4
Asian	N/A	N/A	34	6.0	37	6.4	29	5.4	44	7.9
Black	120	20.5	113	19.8	112	19.5	116	21.5	115	20.7
Hispanic	39	6.7	42	7.4	44	7.7	51	9.5	44	7.9
Pacific Islander	N/A	N/A	N/A	N/A	0	0.0	0	0.0	0	0.0
White	414	70.8	370	64.8	372	64.8	336	62.3	345	62.1
N/A	12	*	5	*	9	*	15	*	15	*
<b>AGE<sup>(4)</sup></b>										
less than 18	0	0.0	0	0.0	0	0.0	0.0	0.0	0	0.0
18-24	211	35.3	209	36.3	211	36.2	204	36.8	184	32.2
25-34	197	33.0	189	32.8	187	32.1	178	32.1	210	36.8
35-49	147	24.6	146	25.3	150	25.7	142	25.6	135	23.6
50-Over	42	7.0	32	5.6	33	5.7	30	5.4	41	7.2
N/A	0	*	0	*	0	*	0	*	0	*

Footnote:

N/A = Not Available

<sup>(1)</sup> Source is State Report VE215330.

<sup>(2)</sup> Gender percentages are based on total known gender, not total enrollment.

\* N/A gender percentage is not computed.

<sup>(3)</sup> Ethnicity percentages are based on total known ethnicity, not total enrollment.

\* N/A ethnicity percentage is not computed.

<sup>(4)</sup> Age percentages are based on total known age, not total enrollment.

\* N/A age percentage is not computed.

<sup>(5)</sup> Pacific Islander ethnicity not reported separately prior to FY2007. Previous years combined with Asian.

## ***Attachment ESIR - 4***

### **QUALITY REVIEW PROCESS**

#### **PROGRAM PROFILE**

##### **Computerized Accounting Assistant (30-101-3)**

This Technical Diploma program went through a quality review process during the 2009 academic year. The internal program quality review team was comprised of Katherine Collins and Tammy Metzke.

The Computerized Accounting Assistant program is a one-year technical diploma program designed to prepare students for entry-level jobs in the field of accounting. This program gives students the option of continuing into the Accounting associate degree program.

Client Reporting Data was provided to reviewers from FY2005 to FY2009. Selected data are reviewed below.

##### ***Demographics for FY 2009:***

1. During FY2009, 32 students were enrolled in the program. This number is slightly higher than the five-year average enrollment of 30 students. Of all those enrolled in 2008, 100% were part-time students.
2. The program generated 7.4 FTEs during FY2009. FTEs decreased by 10.8% from FY2008 and were 39.3% lower than FY2005 (12.2). The program reached its peak enrollment during the five-year period in FY2005 at 12.2 FTEs.
3. Males were 21.9% and females were 78.1% of the FY2009 enrollment. This gender ratio is slightly higher than normal during the five-year period with an average NTO male enrollment of 14.7%.
4. Program enrollments for FY2009 included 18 minority students (56%). The percentage of minority enrollment for FY2009 was 4.6% lower than the five-year average (60.6%) for the program.

### **Course Completion and Other Selected Outcomes for FY 2009:**

1. The course completion rate for these programs in face-to-face sections was 65.6% for FY2009. The course completion rate for these programs in alternative delivery sections was 56.3% for FY2009.
2. The graduation index is calculated by dividing the number of graduates in FY2009 by the number of students enrolled in the program code that same year. The annual graduation index for this program for FY2009 was 37.5% or 12 of the 32 students enrolled.
3. Employment and wage data for this program were available for FY2009, when MATC graduate employment reports show that the annual median wage for program graduates was \$27,379.73.
4. The *Graduate Employment Report* reported statewide the projected demand was for 451 positions.



# Action Plan

back to program page

Based on the Probable Actions Selections, develop an action plan for improvement. Select at least three actions related to three unique indicators that your department will initiate in the next year to improve performance. Develop one or more objectives with related activities for each.

Program Name	College Division	Advisory Committee Review Date
Computerized Accounting Assistant	BUSINESS, GRAPHIC ARTS & INFORMATION TECHNOLOGY	11/1/2007

Indicator Name	Second Year Retention
Action Item	Provide students with a better understanding of the program requirements and a realistic view of the accounting field.
Planned Outcome:	Revise and improve program descriptive material provided to prospective students, community, and counselors in an effort to provide accurate information about the program and the accounting field.
Activity 1:	Modify catalog page description
Person Responsible	Tammy Metzke
Resource Needs	
Timeline:	2012 catalog year
Activity 2:	Provide information to counselors
Person Responsible	Department
Resource Needs	
Timeline:	2011
Activity 3:	Faculty will share this information with students during class and advising
Person Responsible	Department
Resource Needs	
Timeline:	Ongoing

Indicator Name	Second Year Retention
Action	Increase the number of hours of tutoring provided by full time faculty

Item	
Planned Outcome:	Improve student success rates.
Activity 1:	Development of a dedicated Accounting Lab/Classroom to be located at the West Allis Campus to allow students access to full-time faculty assistance throughout the day. This lab/classroom will have computer technology and software relevant to accounting applications, state-of-the-art AV equipment, space for group tutoring, etc.. This facility will be staffed by full-time accounting faculty during office and other hours to provide students with assistance in tutoring, test monitoring, etc.
Person Responsible	Department
Resource Needs	\$90,000
Timeline:	2011

Indicator Name	Second Year Graduation
Action Item	Assist students in developing individual program completion plans. During faculty advising, faculty are able to assist students in identifying a plan for addressing student barriers to successful program completion.
Planned Outcome:	Providing students with the necessary resources so they are able to successfully complete the program.
Activity 1:	Department will identify a week to promote faculty advising.
Person Responsible	Department
Resource Needs	
Timeline:	Ongoing

Indicator Name	Communicate Effectively
Action Item	Encourage faculty to assign oral and written assignments in class in addition to the accounting work assigned.
Planned Outcome:	Students will develop the soft skills necessary for today's work environment.
Activity 1:	Faculty will develop a plan to implement oral and written assignments in the classes where they are deemed to be most appropriate.
Person Responsible	Department
Resource Needs	
Timeline:	Ongoing
Activity 2:	Department will invite outside speakers at various times to speak of the importance of soft skills in addition to their technical knowledge
Person Responsible	Department

Resource Needs Timeline: Ongoing
--

Indicator Name	Utilize Technology
Action Item	Develop and implement a computer skill assessment tool for students entering the program.
Planned Outcome:	Students can be directed to the appropriate level and training, and therefore, will be better prepared to use the technology needed to complete the required coursework.
Activity 1:	Department will develop a computer assessment tool in an effort to determine students' level of proficiency with regards to technology
Person Responsible	Department
Resource Needs	
Timeline:	Fall 2011
Activity 2:	Department will implement the computer assessment tool developed in Fall 2011.
Person Responsible	Department
Resource Needs	
Timeline:	Ongoing

## Quality Review Process Scorecard FY2009

30-101-2

### COMPUTERIZED ACCOUNTING ASSISTANT

State Indicators	Actual Performance FY2009	Threshold Performance Average of 4 lowest in the State	Target Performance Average of 4 highest in the State
Pass Rate of 80%	54.83	54.84	65.81
Pass Rate of 80% for Special Populations	47.82	47.83	57.39
Pass Rate of 80% for Minority	52.94	52.94	63.53
Fall to Spring Retention	91.67	91.67	100.00
Second Year Retention	52.63	52.63	63.16
One Year Graduation	41.25	41.25	49.50
Second Year Graduation	36.84	36.84	44.21
Job Placement - All Employment	60.00	60.00	72.00
Job Placement - Related Employment	40.00	40.00	48.00

MATC Indicators	Actual Performance FY2009	Threshold Performance	Target Performance
	Score	Score	Score
<b>1) Student Outcomes Assessment</b>	6.00	2.00	6.00
<b>2) Program Currency</b>	4.86	3.72	4.94
<b>3) Core Ability Attainment:</b>			
Communicate Effectively	0.00	3.46	4.41
Collaborate with Others	0.00	3.35	4.70
Respect Diversity	0.00	3.43	4.69
Demonstrate Responsibility	0.00	3.58	4.65
Think Critically	0.00	3.50	4.67
Utilize Technology	0.00	3.45	4.59
Apply Math and Science	0.00	2.94	4.26
<b>4) Student Satisfaction Attainment</b>	5.00	3.67	4.90
<b>5) Employer Satisfaction Attainment</b>	0.00	3.38	4.34
<b>6) Program Indicator 1</b>	N/A	N/A	N/A
<b>7) Program Indicator 2</b>	N/A	N/A	N/A

Footnotes:

Targets will be set in consultation with each program area or will be consistent with college-wide percent increase in FTEs

1) Actual = Source is Student Outcomes Assessment administered by MATC.

Threshold = avg of all responding MATC programs, Target = avg of four highest performing MATC programs

2) Actual = Source is Program Currency Assessment administered by MATC.

Threshold = avg of all responding MATC programs, Target = avg of four highest performing MATC programs

3) Actual = Source is Core Abilities Assessment administered by MATC.

Threshold = avg of all responding MATC programs, Target = avg of four highest performing MATC programs

4) Actual = Source is Student Satisfaction Survey administered by MATC.

Threshold = avg of all responding MATC programs, Target = avg of four highest performing MATC programs

5) Actual = Source is Employer Satisfaction Survey administered by MATC.

Threshold = avg of all responding MATC programs, Target = avg of four highest performing MATC programs

**Quality Review Process  
Scorecard  
FY2009**

30-101-2

**COMPUTERIZED ACCOUNTING ASSISTANT**

	FY2005		FY2006		FY2007		FY2008		FY2009	
	N	%	N	%	N	%	N	%	N	%
<b>1) Program Enrollment: Headcount<sup>(1)</sup></b>	34		25		34		26		32	
Full-Time	2	5.9	0	0.0	3	8.8	1	3.8	0	0.0
Part-Time	32	94.1	25	100.0	31	91.2	25	96.2	32	100.0
<b>2) Program Enrollment: FTEs<sup>(1)</sup></b>	12.2		7.6		13.7		8.3		7.4	
<b>3) Graduation<sup>(1)</sup></b>	13	38.2	11	44.0	8	23.5	8	30.8	12	37.5
<b>4) Racial/Ethnic Minority Students<sup>(1)</sup></b>	18	52.9	15	60.0	21	61.8	18	69.2	17	53.1
<b>5) Section Completion Rate<sup>(1)</sup></b>										
Traditional Delivery Total Enrollment	756		716		663		616		681	
Pass	552	73.0	474	66.2	294	44.3	396	64.3	447	65.6
Non-Pass	82	10.8	74	10.3	37	5.6	90	14.6	93	13.7
Other	122	16.1	168	23.5	332	50.1	130	21.1	141	20.7
Alternative Delivery Total Enrollment	143		202		265		308		371	
Pass	80	55.9	119	58.9	80	30.2	177	57.5	209	56.3
Non-Pass	17	11.9	13	6.4	20	7.5	16	5.2	49	13.2
Other	46	32.2	70	34.7	165	62.3	87	28.2	113	30.5

Footnotes:

N/A = Not Available

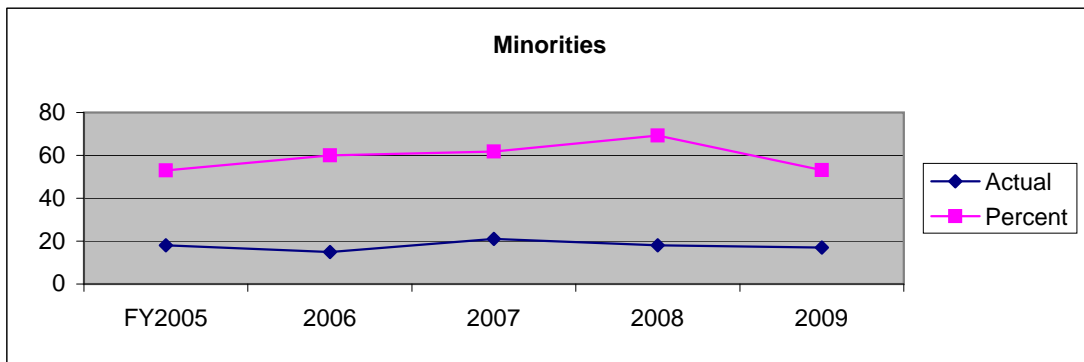
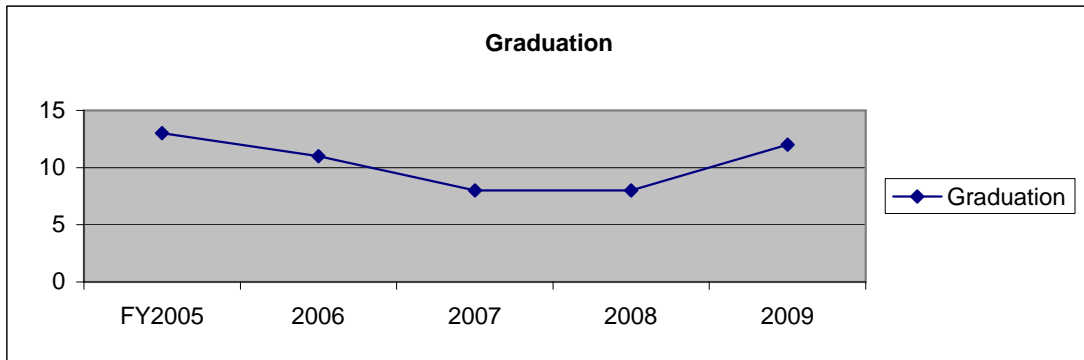
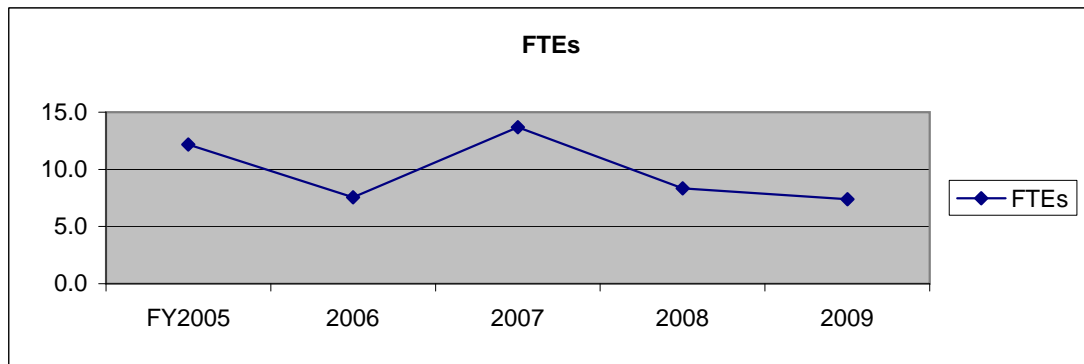
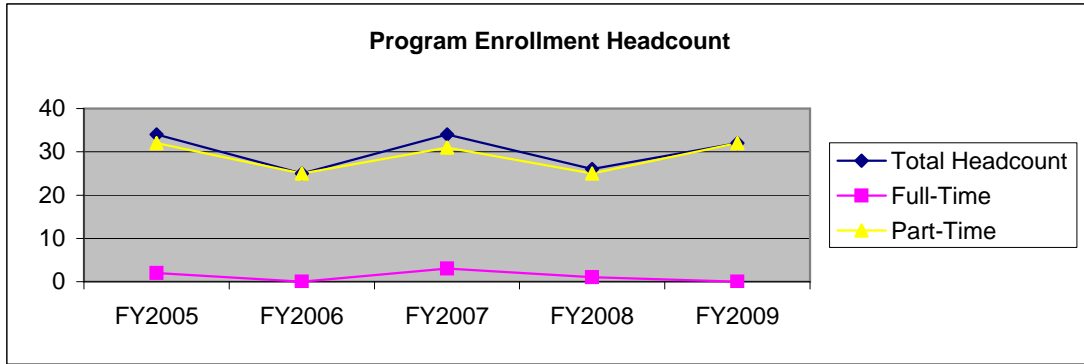
<sup>(1)</sup> Source is State Report VE215330. Racial/Ethnic minorities include Black/African American, Hispanic, Asian or Pacific Islander and Native American  
Graduation counts include those entered on COSMO by the closing of Client Reporting and with a graduation date within the year being reported  
Also included are those who met requirements for graduation but chose not to apply for graduation.

<sup>(1)</sup> Source is COSMO. These are the course completion rates of students in both traditional and alternative delivery sections  
with the same department as the department of the program. Pass: C or better, AU and P. Non-Pass: U. Other: W, Uw, I, IP and no grade.  
**Note: Prior to 2008, a passing grade was D- or better.**

# Quality Review Process Scorecard FY2009

30-101-2

COMPUTERIZED ACCOUNTING ASSISTANT



**Quality Review Process  
Scorecard  
FY2009**

30-101-2

**COMPUTERIZED ACCOUNTING ASSISTANT**

	FY2005		FY2006		FY2007		FY2008		FY2009	
	N	%	N	%	N	%	N	%	N	%
<b>ENROLLMENT<sup>(1)</sup></b>										
Total	34		25		34		26		32	
<b>GENDER<sup>(1)(2)</sup></b>										
Male	7	20.6	1	4.0	4	11.8	4	15.4	7	21.9
Female	27	79.4	24	96.0	30	88.2	22	84.6	25	78.1
N/A	0	*	0	*	0	*	0	*	0	*
<b>ETHNICITY<sup>(1)(3)(5)</sup></b>										
Indian	0	0.0	0	0.0	1	3.1	1	3.8	0	0.0
Asian	N/A	N/A	4	16.0	7	21.9	7	26.9	4	12.9
Black	13	39.4	9	36.0	13	40.6	8	30.8	8	25.8
Hispanic	3	9.1	2	8.0	0	0.0	2	7.7	5	16.1
Pacific Islander	N/A	N/A	N/A	N/A	0	0.0	0	0.0	0	0.0
White	17	51.5	10	40.0	11	34.4	8	30.8	14	45.2
N/A	1	*	0	*	2	*	0	*	1	*
<b>AGE<sup>(4)</sup></b>										
less than 18	0	0.0	0	0.0	0	0.0	0	0.0	0	0.0
18-24	12	35.3	6	24.0	5	14.7	4	15.4	6	18.8
25-34	13	38.2	12	48.0	21	61.8	15	57.7	15	46.9
35-49	12	35.3	9	36.0	7	20.6	7	26.9	11	34.4
50-0ver	3	8.8	5	20.0	2	5.9	3	11.5	5	15.6
N/A	0	*	0	*	0	*	0	*	0	*

Footnote:

N/A = Not Available

<sup>(1)</sup> Source is State Report VE215330.

<sup>(2)</sup> Gender percentages are based on total known gender, not total enrollment.

\* N/A gender percentage is not computed.

<sup>(3)</sup> Ethnicity percentages are based on total known ethnicity, not total enrollment.

\* N/A ethnicity percentage is not computed.

<sup>(4)</sup> Age percentages are based on total known age, not total enrollment.

\* N/A age percentage is not computed.

<sup>(5)</sup> Pacific Islander ethnicity not reported separately prior to FY2007. Previous years combined with Asian.

## ***Attachment ESIR - 5***

### ***QUALITY REVIEW PROCESS***

#### ***PROGRAM PROFILE***

##### ***Logistics (10-182-2)***

This Associate Degree program went through a quality review process during the 2009 academic year. The internal program quality review team was comprised of Rich Busalacchi and Jay Lorino.

The Logistics program is an associate degree program designed to prepare students for jobs in the exciting fields of transportation or materials management. This program gives students a wide variety of career choices from transportation or distribution to purchasing, inventory or production control.

Client Reporting Data was provided to reviewers from FY2005 to FY2009. Selected data are reviewed below.

##### ***Demographics for FY 2009:***

1. During FY2009, 63 students were enrolled in the program. This number is higher than the five-year average enrollment of 52 students. Of all those enrolled in 2008, 76.2% were part-time students.
2. The program generated 30.4 FTEs during FY2009. FTEs increased by 60% from FY2008 and were 25% higher than FY2005 (22.8). The program reached its peak enrollment during the five-year period in FY2009 at 63 FTEs.
3. Males were 57.1% and females were 42.9% of the FY2009 enrollment. This gender ratio is slightly higher than normal during the five-year period with an average NTO female enrollment of 39.6%.
4. Program enrollments for FY2009 included 16 minority students (25%). The percentage of minority enrollment for FY2009 was 10.6% higher than the five-year average (14.4%) for the program.

### **Course Completion and Other Selected Outcomes for FY 2009:**

1. The course completion rate for these programs in face-to-face sections was 75% for FY2009. The course completion rate for these programs in alternative delivery sections was 84% for FY2009.
2. The graduation index is calculated by dividing the number of graduates in FY2009 by the number of students enrolled in the program code that same year. The annual graduation index for this program for FY2009 was 15.9% or 10 of the 63 students enrolled.
3. Employment and wage data for this program were available for FY2009, when MATC graduate employment reports show that the annual median wage for program graduates was \$28,932.80.
4. The *Graduate Employment Report* reported statewide the projected demand was for 168 positions.



# Action Plan

back to program page

Based on the Probable Actions Selections, develop an action plan for improvement. Select at least three actions related to three unique indicators that your department will initiate in the next year to improve performance. Develop one or more objectives with related activities for each.

Program Name	College Division	Advisory Committee Review Date
Logistics	BUSINESS, GRAPHIC ARTS & INFORMATION TECHNOLOGY	5/5/2010

Indicator Name	Course Completion
Action Item	Curriculum for the first year of the program will be modified to include Blackboard distance learning technology to prepare students for curriculum delivered fully on-line during the second year of the program. The goal is to create a more flexible student learning environment and thereby prevent dropouts and job-outs due to nonacademic challenges related to work and family.
Planned Outcome:	Increase course completion rate by 5% over the 2009 indicator.

Indicator Name	Course Completion
Action Item	As an extension of action item 1 for increasing the program course completion rate, goal two entails the conversion of year-two curriculum to entirely on-line delivery. Once again, the objective is to allow students the greatest flexibility in achieving their academic goals.
Planned Outcome:	Increase course completion rate by 5% over the 2009 indicator.

Indicator Name	Program Currency
Action Item	Update WIDS course outcome summaries for technical courses.
Planned Outcome:	To have a minimum of 75% of the course outcome summaries updated over the next academic year.

Indicator Name	Second Year Retention
Action Item	Create a social media presence (eg. Facebook and LinkedIn) for the Logistics Management Program that creates a medium for communication with area industry professionals employers and students.
Planned Outcome:	To increase second year retention by 4.5% within the next academic year over the 2009 indicator.

Indicator Name	Third Year Retention
Action Item	Create a social media presence (eg. Facebook and LinkedIn) for the Logistics Management Program that creates a medium for communication with area industry professionals employers and students.
Planned Outcome:	To increase second year retention by 3% within the next academic year over the 2009 indicator.

**Quality Review Process  
Scorecard  
FY2009**

10-182-2  
LOGISTICS

<b>State Indicators</b>	Actual Performance FY2009	Threshold Performance Average of 4 lowest in the State	Target Performance Average of 4 highest in the State
Course Completion	76.19	76.19	91.43
Special Populations Course Completion	70.58	70.59	84.71
Minority Course Completion	53.33	53.33	64.00
Second Year Retention	76.47	76.47	91.76
Third Year Retention	50.00	50.00	60.00
Third Year Graduation	29.17	29.17	35.00
Fifth Year Graduation	40.43	70.21	100.00
Job Placement - All Employment	100.00	100.00	100.00
Job Placement - Related Employment	100.00	75.00	100.00
Non-Traditional Gender	N/A	N/A	N/A

<b>MATC Indicators</b>	Actual Performance FY2009	Threshold Performance	Target Performance
	Score	Score	Score
<b>1) Student Outcomes Assessment</b>	6.00	2.00	6.00
<b>2) Program Currency</b>	3.86	3.72	4.94
<b>3) Core Ability Attainment:</b>			
<b>Communicate Effectively</b>	0.00	3.46	4.41
<b>Collaborate with Others</b>	0.00	3.35	4.70
<b>Respect Diversity</b>	0.00	3.43	4.69
<b>Demonstrate Responsibility</b>	0.00	3.58	4.65
<b>Think Critically</b>	0.00	3.50	4.67
<b>Utilize Technology</b>	0.00	3.45	4.59
<b>Apply Math and Science</b>	0.00	2.94	4.26
<b>4) Student Satisfaction Attainment</b>	4.13	3.67	4.90
<b>5) Employer Satisfaction Attainment</b>	0.00	3.38	4.34
<b>6) Program Indicator 1</b>	N/A	N/A	N/A
<b>7) Program Indicator 2</b>	N/A	N/A	N/A

Footnotes:

Targets will be set in consultation with each program area or will be consistent with college-wide percent increase in FTEs

- 1) Actual = Source is Student Outcomes Assessment administered by MATC.  
Threshold = avg of all responding MATC programs, Target = avg of four highest performing MATC programs
- 2) Actual = Source is Program Currency Assessment administered by MATC.  
Threshold = avg of all responding MATC programs, Target = avg of four highest performing MATC programs
- 3) Actual = Source is Core Abilities Assessment administered by MATC.  
Threshold = avg of all responding MATC programs, Target = avg of four highest performing MATC programs
- 4) Actual = Source is Student Satisfaction Survey administered by MATC.  
Threshold = avg of all responding MATC programs, Target = avg of four highest performing MATC programs
- 5) Actual = Source is Employer Satisfaction Survey administered by MATC.  
Threshold = avg of all responding MATC programs, Target = avg of four highest performing MATC programs

**Quality Review Process  
Scorecard  
FY2009**

10-182-2  
LOGISTICS

	FY2005		FY2006		FY2007		FY2008		FY2009	
	N	%	N	%	N	%	N	%	N	%
<b>1) Program Enrollment: Headcount<sup>(1)</sup></b>	54		46		51		45		63	
Full-Time	8	14.8	4	8.7	3	5.9	9	20.0	15	23.8
Part-Time	46	85.2	42	91.3	48	94.1	36	80.0	48	76.2
<b>2) Program Enrollment: FTEs<sup>(1)</sup></b>	22.8		19.0		18.1		18.2		30.4	
<b>3) Graduation<sup>(1)</sup></b>	12	22.2	3	6.5	7	13.7	7	15.6	10	15.9
<b>4) Racial/Ethnic Minority Students<sup>(1)</sup></b>	6	11.1	4	8.7	3	5.9	5	11.1	15	23.8
<b>5) Section Completion Rate<sup>(1)</sup></b>										
Traditional Delivery Total Enrollment	N/A		N/A		31		17		16	
Pass	N/A	N/A	N/A	N/A	23	74.2	17	100.0	12	75.0
Non-Pass	N/A	N/A	N/A	N/A	6	19.4	0	0.0	1	6.3
Other	N/A	N/A	N/A	N/A	2	6.5	0	0.0	3	18.8
Alternative Delivery Total Enrollment	165		144		406		335		175	
Pass	147	89.1	119	82.6	221	54.4	249	74.3	147	84.0
Non-Pass	11	6.7	12	8.3	14	3.4	42	12.5	10	5.7
Other	7	4.2	13	9.0	171	42.1	32	9.6	18	10.3

Footnotes:

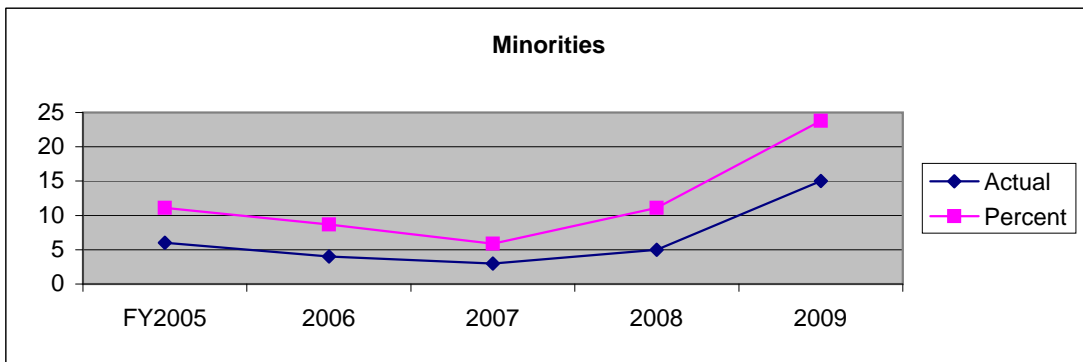
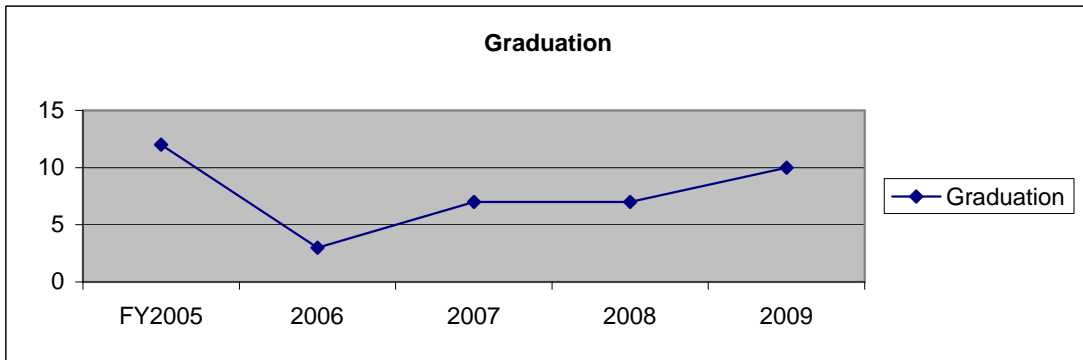
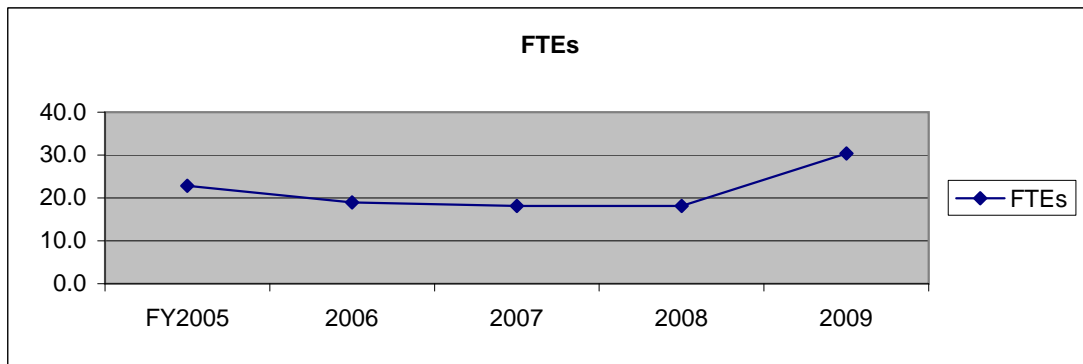
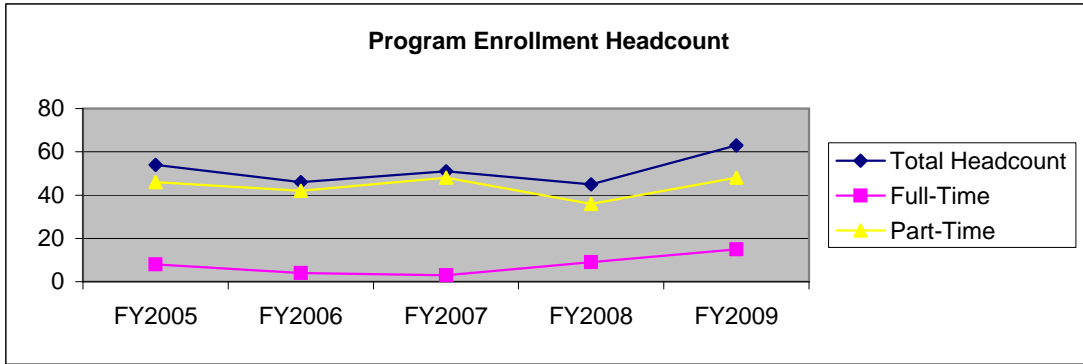
N/A = Not Available

<sup>(1)</sup> Source is State Report VE215330. Racial/Ethnic minorities include Black/African American, Hispanic, Asian or Pacific Islander and Native American  
Graduation counts include those entered on COSMO by the closing of Client Reporting and with a graduation date within the year being reported  
Also included are those who met requirements for graduation but chose not to apply for graduation.

<sup>(1)</sup> Source is COSMO. These are the course completion rates of students in both traditional and alternative delivery sections  
with the same department as the department of the program. Pass: C or better, AU and P. Non-Pass: U. Other: W, Uw, I, IP and no grade.  
**Note: Prior to 2008, a passing grade was D- or better.**

# Quality Review Process Scorecard FY2009

10-182-2  
LOGISTICS



**Quality Review Process  
Scorecard  
FY2009**

10-182-2

**LOGISTICS**

	FY2005		FY2006		FY2007		FY2008		FY2009	
	N	%	N	%	N	%	N	%	N	%
<b>ENROLLMENT<sup>(1)</sup></b>										
Total	54		46		51		45		63	
<b>GENDER<sup>(1)(2)</sup></b>										
Male	40	74.1	26	56.5	30	58.8	25	55.6	36	57.1
Female	14	25.9	20	43.5	21	41.2	20	44.4	27	42.9
N/A	0	*	0	*	0	*	0	*	0	*
<b>ETHNICITY<sup>(1)(3)(5)</sup></b>										
Indian	0	0.0	0	0.0	1	2.0	0	0.0	0	0.0
Asian	N/A	N/A	1	2.3	0	0.0	0	0.0	0	0.0
Black	2	3.8	2	4.5	1	2.0	3	6.7	7	11.3
Hispanic	3	5.8	1	2.3	1	2.0	2	4.4	8	12.9
Pacific Islander	N/A	N/A	N/A	N/A	0	0.0	0	0.0	0	0.0
White	47	90.4	40	90.9	46	93.9	40	88.9	47	75.8
N/A	2	*	2	*	2	*	0	*	1	*
<b>AGE<sup>(4)</sup></b>										
less than 18	0	0.0	0	0.0	0	0.0	0.0	0.0	0	0.0
18-24	10	18.5	11	23.9	7	13.7	5	11.1	7	11.1
25-34	19	35.2	12	26.1	15	29.4	15	33.3	23	36.5
35-49	22	40.7	22	47.8	25	49.0	19	42.2	22	34.9
50-0ver	3	5.6	1	2.2	4	7.8	4	8.9	11	17.5
N/A	0	*	0	*	0	*	0	*	0	*

Footnote:

N/A = Not Available

<sup>(1)</sup> Source is State Report VE215330.

<sup>(2)</sup> Gender percentages are based on total known gender, not total enrollment.

\* N/A gender percentage is not computed.

<sup>(3)</sup> Ethnicity percentages are based on total known ethnicity, not total enrollment.

\* N/A ethnicity percentage is not computed.

<sup>(4)</sup> Age percentages are based on total known age, not total enrollment.

\* N/A age percentage is not computed.

<sup>(5)</sup> Pacific Islander ethnicity not reported separately prior to FY2007. Previous years combined with Asian.

***matc*****Milwaukee Area Technical College****POLICY**

Title: MILWAUKEE AREA TECHNICAL COLLEGE FOUNDATION, INC.	Code: J0200
Authority: Board Minutes, 11/18/81; 7/23/85; 2/15/00	Original Adoption: 11/18/81 Revised/Reviewed: 2/15/00 Effective: 2/16/00

The Milwaukee Area Technical College District Board recognizes and supports the need for and benefit of the Milwaukee Area Technical College Foundation, Inc. The MATC Foundation, Inc. is a nonprofit corporation organized under the laws of the State of Wisconsin and exists solely for the benefit of the college.

The Milwaukee Area Technical College District Board recognizes the Foundation as a separate operating entity, but also believes that the policy and philosophical interrelationship between the two entities must be secured by the presence of district board members or their designees on the Foundation Board. Membership is to be defined in the Foundation Bylaws, but should include no less than one ~~two~~ representative from the MATC Board and the president [of the college](#).

## Attachment ESIR - 7

## Advisory Committee Data Summary - by Committee

### Apr - Jun, 2010

Advisory Committee	Total	Category			Minority	Gender		Grads
		Mgt	Labor	Consultants		Female	Male	
Accounting	9	8	0	1	1	4	5	1
Air Conditioning Refrigeration	14	12	1	1	2	1	13	8
Anesthesia Technology	9	3	5	1	2	5	4	4
Animation	7	5	2	0	0	2	5	2
Appliance Technician	8	7	0	1	2	0	8	1
Architectural Technology	10	5	3	2	2	4	6	3
Associate Degree Nursing	8	7	0	1	1	7	1	1
Automobile/auto Body Servicing	19	14*	2*	2*	0	1	18	4
Automotive Technology	6	5	0	1	1	1	5	0
Aviation Mechanics	11	7	2	2	2	0	11	2
Baking Production	11	6	5	0	3	6	5	4
Banking And Finance	12	11	0	1	4	9	3	0
Barber Cosmetologist Apprenticeship	15	11	3	1	8	7	8	5
Barber/cosmetologist	12	10	2	0	8	9	3	6
Biomedical Electronics Technology	13	2	11	0	4	2	11	7
Bricklaying And Masonry	7	3	3	1	1	1	6	4
Business Management	6	4	2	0	1	2	4	4
Cardiovascular Technology	11	5	6	0	0	5	6	2
Carpenters & Cabinetmakers	7	6	0	1	0	1	6	1
Chemical Technician	13	8	4	1	3	3	10	5
Civil Engineering Technology	7	4	3	0	1	2	5	2
Clinical Laboratory Technician Phlebotomy	10	7	2	1	1	7	3	0
Computer Electronics Technology	5	2	2	1	0	1	4	1
Computer Simulation & Gaming	7	5	1	1	0	0	7	2
Criminal Justice Law Enforcement	10	9	0	1	1	1	9	4
Culinary Arts	14	10	2	2	1	4	10	4
Dental Assistant	10	6	2	2	0	8	2	4
Dental Hygiene	7	3*	2*	1*	1	4	3	3
Dental Laboratory Technology	6	5	1	0	0	1	5	4
Diesel & Powertrain Servicing	16	11*	2*	2*	1	1	15	3
Dietetic Technician/dietary Manager	12	9	2	1	2	8	4	4
Early Childhood Education	14	10	0	4	5	12	2	3
Ecommerce/web Administration	10	8	1	1	1	3	7	3
Electricity - Diploma	8	5	3	0	2	3	5	2
Electronic Engineering Technology	10	5	4	1	3	2	8	5
Electronic Technology Communication	7	4	2	1	0	2	5	2
Electronic Technology Controls Automation	10	6	4	0	2	1	9	4
Environmental Health & Water Quality Tech	14	6	8	0	2	4	10	4
Fire Science/ems	10	6	3	1	1	1	9	5

\* Category Information Incomplete

8/12/2010

Page 1 of 4

## Advisory Committee Data Summary - by Committee

### Apr - Jun, 2010

Advisory Committee	Total	Category			Minority	Gender		Grads
		Mgt	Labor	Consultants		Female	Male	
Funeral Service	9	9	0	0	1	1	8	5
Graphic Design	11	7	3	1	1	4	7	7
Health Unit Coordinator	11	5	6	0	3	10	1	3
Horticulture	8	6	2	0	0	2	6	1
Hotel/hospitality-meeting/event Management	18	17	1	0	4	11	7	3
Human Service Associate	13	5*	4*	3*	6	11	2	4
Interior Design	11	7	3	1	1	7	4	4
Interpreter Technician	6	5	0	1	0	4	2	0
It Computer Support Specialist	13	9	2	2	0	6	7	3
It Information Systems Security Specialist	13	7*	5*	0*	1	2	11	2
It Network Specialist	7	1	6	0	0	1	6	1
It Programmer/analyst	10	5	3	2	1	5	5	2
Line Mechanic	5	3	2	0	0	1	4	0
Machine Tool & Computer Numerical Control	4	4	0	0	0	1	3	0
Machine Trades Apprentice	8	4	2	2	0	3	5	1
Maintenance & Industrial Electrician Apprentice	9	3	4	2	0	2	7	2
Management Development	11	9	2	0	2	6	5	6
Marketing	9	9	0	0	3	5	4	6
Mechanical Drafting & Design	10	7	3	0	0	2	8	4
Medical Assistant	4	2	2	0	1	4	0	1
Medical Coding	10	3	4	3	2	10	0	3
Medical Interpreter	7	3	3	1	6	5	2	0
Music Occupations	10	6	1	3	3	2	8	1
Nursing Assistant	6	3	3	0	1	6	0	1
Occupational Therapy Assistant	11	2	9	0	1	9	2	7
Office Technology	9	6	3	0	0	9	0	2
Opticianry Science	8	5	3	0	1	3	5	3
Painting & Decorating Apprentice	6	1	3	2	1	1	5	2
Paralegal	8	4	4	0	3	4	4	4
Pharmacy Technician	10	7	3	0	1	7	3	3
Photography	13	12	1	0	0	3	10	5
Physical Therapist Assistant	9	3	3	3	1	7	2	4
Power Engineering & Boiler Operator	9	5	4	0	1	0	9	3
Practical Nursing	6	3	2	1	3	4	2	3
Pre-college Education	10	8	2	0	1	5	5	0
Preparatory Plumbing	9	6*	1*	1*	1	1	8	1
Radiography	12	5	6	1	2	7	5	4
Real Estate	10	9	1	0	1	3	7	0
Renal Dialysis Technician	9	4	5	0	4	9	0	9

\* Category Information Incomplete

8/12/2010

Page 2 of 4

## Advisory Committee Data Summary - by Committee

### Apr - Jun, 2010

Advisory Committee	Total	Category			Minority	Gender		Grads
		Mgt	Labor	Consultants		Female	Male	
Respiratory Care	6	3*	2*	0*	1	4	2	3
Retail Management/fashion Marketing	7	7	0	0	1	5	2	3
Sheet Metal Apprentice	9	4	2	3	0	1	8	5
Supply Chain Management	14	13	1	0	0	2	12	2
Surgical Technology	13	4	8	1	3	7	6	5
Teacher Education Track	13	4	3	6	6	8	5	1
Television Video Production	10	3	5	2	3	2	8	1
Tool & Die Making	9	7	2	0	1	0	9	3
Vi-com/computer Graphics	15	8	7	0	0	1	14	6
Welding/weld Tech	8	6	2	0	0	1	7	4

## Advisory Committee Data Summary - by Division

Division	Total Members	Category						Minority		Gender				Grads	
		Mgt		Labor		Consultants				Female		Male			
Business, Graphic Arts, & Information Technolo	304	220	72%	70	23%	13	4%	47	15%	126	41%	178	59%	92	30%
Health Occupations	204	106	52%	79	39%	17	8%	38	19%	138	68%	66	32%	76	37%
Liberal Arts & Sciences	69	38	55%	12	17%	18	26%	23	33%	40	58%	29	42%	14	20%
Pre-college	10	8	80%	2	20%	0	0%	1	10%	5	50%	5	50%	0	0%
Technology & Applied Sciences	264	163	62%	70	27%	28	11%	29	11%	38	14%	226	86%	83	31%
Television & Video Production	10	3	30%	5	50%	2	20%	3	30%	2	20%	8	80%	1	10%
<b>TOTAL</b>	<b>861</b>	<b>538</b>	<b>62%</b>	<b>238</b>	<b>28%</b>	<b>78</b>	<b>9%</b>	<b>141</b>	<b>16%</b>	<b>349</b>	<b>41%</b>	<b>512</b>	<b>59%</b>	<b>266</b>	<b>31%</b>

# QTRLY REPORT ON ADVISORY COMMITTEE MEETINGS

April, May, June 2010

DATE	TIME	LOCATION	ADVISORY MEETING
4/1/2010	1:00 PM	H112 -- Milwaukee Campus	MEDICAL INTERPRETER
4/13/2010	8:15 AM	A114 -- North Campus	ASSOCIATE DEGREE NURSING
4/13/2010	8:30 AM	M210 -- Milwaukee Campus	MARKETING
4/14/2010	8:00 AM	H112 -- Milwaukee Campus	PRACTICAL NURSING
4/14/2010	1:00 PM	M204 -- Milwaukee Campus	RESPIRATORY CARE
4/16/2010	7:30 AM	H112 -- Milwaukee Campus	MEDICAL ASSISTANT
4/20/2010	8:30 AM	E114 -- South Campus	ACCOUNTING
4/20/2010	8:00 AM	B116 -- South Campus	AUTOMOBILE/AUTO BODY SERVICING
4/20/2010	5:30 PM	H112 -- Milwaukee Campus	DENTAL ASSISTANT
4/20/2010	11:30 AM	M614 -- Milwaukee Campus	MAINTENANCE & INDUSTRIAL ELECTRICIAN APPRENTICE
4/21/2010	4:30 PM	M204 -- Milwaukee Campus	ANESTHESIA TECHNOLOGY
4/21/2010	9:30 AM	M614 -- Milwaukee Campus	BAKING PRODUCTION
4/22/2010	8:00 AM	M614 -- Milwaukee Campus	OFFICE TECHNOLOGY
4/22/2010	2:30 PM	M614 -- Milwaukee Campus	PHOTOGRAPHY
4/22/2010	5:00 PM	M612 -- Milwaukee Campus	TEACHER EDUCATION TRACK
4/23/2010	8:30 AM	117 -- West Campus	INTERIOR DESIGN
4/23/2010	8:00 AM	107 -- West Campus	IT NETWORKING SPECIALIST
4/27/2010	10:30 AM	B170 -- South Campus	DIESEL & POWERTRAIN SERVICING
4/27/2010	5:30 PM	117 -- West Campus	MEDICAL CODING
4/27/2010	4:00 PM	H112 -- Milwaukee Campus	RENAL DIALYSIS TECHNICIAN
4/28/2010	7:30 AM	H112 -- Milwaukee Campus	DENTAL HYGIENE
4/28/2010	11:30 AM	M616 -- Milwaukee Campus	ELECTRONIC TECHNOLOGY CONTROLS & AUTOMATION
4/29/2010	8:30 PM	M614 -- Milwaukee Campus	RADIOGRAPHY
4/29/2010	3:00 PM	M612 -- Milwaukee Campus	VI-COM/COMPUTER GRAPHICS
4/30/2010	1:00 PM	A102 -- South Campus	IT COMPUTER SUPPORT SPECIALIST

DATE	TIME	LOCATION	ADVISORY MEETING
5/4/2010	11:30 AM	M616 --Milwaukee Campus	BIOMEDICAL ELECTRONICS TECHNOLOGY
5/4/2010	7:30 AM	Off Campus	LOGISTICS
5/4/2010	7:30 AM	M614 -- Milwaukee Campus	OCCUPATIONAL THERAPY ASSISTANT
5/5/2010	3:00 PM	M614 -- Milwaukee Campus	CLINICAL LABORATORY TECHNICIAN PHLEBOTOMY
5/6/2010	3:00 PM	1205Bldg -- West Campus	FUNERAL SERVICE
5/7/2010	9:00 AM	A200E -- South Campus	CRIMINAL JUSTICE --LAW ENFORCEMENT
5/7/2010	8:30 AM	C444B--Milwaukee Campus	ELECTRONIC TECHNOLOGY COMMUNICATION
5/7/2010	7:30 AM	M612 -- Milwaukee Campus	SURGICAL TECHNOLOGY
5/10/2010	9:00 AM	A102 -- South Campus	FIRE SCIENCE/EMS
5/12/2010	8:00 AM	E114 -- South Campus	MACHINE TRADES APPRENTICE
5/14/2010	8:00 AM	A202 -- North Campus	IT INFORMATION SECURITY SYSTEMS SPECIALIST
5/17/2010	2:30 PM	A202 -- North Campus	IT PROGRAMMER/ANALYST
5/25/2010	8:00 AM	Off Campus -- MATC EPD Traini	LINE MECHANIC
5/25/2010	12:00 PM	Lec Hall A -- South Campus	SHEET METAL APPRENTICE
6/16/2010	8:00 AM	E114 -- South Campus	POWER ENGINEERING & BOILER OPERATOR

REPORT ON ADVISORY COMMITTEE MEMBERSHIP  
APRIL, MAY, AND JUNE 2010

COMMITTEE	VAC	MEMBERS RECENTLY LEFT	MEMBERS NEWLY ADDED
<b><u>BUSINESS, GRAPHIC ARTS, &amp; INFORMATION TECHNOLOGY</u></b>			
ACCOUNTING 9 members      1 grad(s)	0		
ANIMATION 7 members      2 grad(s)	2		
BAKING PRODUCTION 11 members    4 grad(s)	0		
BANKING AND FINANCE 12 members    0 grad(s)	0		Nate McCardell Prudential Financial Manager, Financial Services (Supervisor/Mgr/Nonminority)
BARBER COSMETOLOGIST APPRENTICESHIP 15 members    5 grad(s)	0		
BARBER/COSMETOLOGIST 12 members    6 grad(s)	0		
BUSINESS MANAGEMENT 6 members      4 grad(s)	3		

REPORT ON ADVISORY COMMITTEE MEMBERSHIP  
APRIL, MAY, AND JUNE 2010

COMMITTEE	VAC	MEMBERS RECENTLY LEFT	MEMBERS NEWLY ADDED
COMPUTER SIMULATION & GAMING 7 members      2 grad(s)	2		
CULINARY ARTS 14 members      4 grad(s)	0		
eCOMMERCE/WEB ADMINISTRATION 10 members      3 grad(s)	0		Greg Kosmeder J.C. Penny IT Manager (Supervisor/Mgr/Nonminority)
			Paul Gueller Vesivius Technologies Lead Interactive (Supervisor/Mgr/Nonminority)
ENVIRONMENTAL HEALTH & WATER QUALITY TECH 15 members      4 grad(s)	0		
GRAPHIC DESIGN 11 members      7 grad(s)	0		
HORTICULTURE 8 members      1 grad(s)	1		

**REPORT ON ADVISORY COMMITTEE MEMBERSHIP**  
**APRIL, MAY, AND JUNE 2010**

<b>COMMITTEE</b>	<b>VAC</b>	<b>MEMBERS RECENTLY LEFT</b>	<b>MEMBERS NEWLY ADDED</b>
<b>HOTEL/HOSPITALITY- MEETING/EVENT MANAGEMENT</b>  18 members    3 grad(s)	0	Scott Ohzourk Best Western Midway Hotel Brookfield Hotel Manager (Supervisor/Mgr/Nonminority)	Becky Steimle Milwaukee Journal Sentinel Special Events Manager (Supervisor/Mgr/Nonminority)
		Jason Kuechenmeister Mark Travel Funjet vacations Customer Care Supervisor (Supervisor/Mgr/Nonminority)	SanDee Peller Italian Conference Center Director of Catering & Events (Supervisor/Mgr/Nonminority)
		Roberta Rowell Hilton Milwaukee City Center PBX Supervisor (Labor/Nonminority)	Lisa Hoppe Lisa Hoppe Travel President/Owner (Supervisor/Mgr/Nonminority)
		Carrie A. Hersh PHR Wisconsin Regional Training Partnership Director (Supervisor/Mgr/Nonminority)	David Larson VISIT Milwaukee Director of Convention Services (Supervisor/Mgr/Nonminority)
			Bryan Lucas Residence Inn by Marriott General Manager (Supervisor/Mgr/Nonminority)

REPORT ON ADVISORY COMMITTEE MEMBERSHIP  
APRIL, MAY, AND JUNE 2010

<b>COMMITTEE</b>	<b>VAC</b>	<b>MEMBERS RECENTLY LEFT</b>	<b>MEMBERS NEWLY ADDED</b>
			Ellen Hayward Friends of Boerner Botanical Garden: President/CEO (Supervisor/Mgr./Nonminority)

**REPORT ON ADVISORY COMMITTEE MEMBERSHIP**  
**APRIL, MAY, AND JUNE 2010**

<b>COMMITTEE</b>	<b>VAC</b>	<b>MEMBERS RECENTLY LEFT</b>	<b>MEMBERS NEWLY ADDED</b>
<p>INFORMATION SECURITY SPECIALIST</p> <p>8 members      0 grad(s)</p>	1	<p>Jim Hilby            University of Wisconsin            Enterprise Project Manager            (Supervisor/Mgr/Nonminority)</p> <p>Daryl Duenkel            St Joseph Community Hospital            VP Information Serv/CIO            (Supervisor/Mgr/Nonminority)</p> <p>Richard Garcia            SBC            Technical Support - Voice            (Labor/Minority)</p> <p>John Tomlinson            Fiserv Inc            Business Process Manager            (Supervisor/Mgr/Nonminority)</p> <p>James Dziak            Fortinet            Regional Sales Manager            (Supervisor/Mgr/Nonminority)</p>	

REPORT ON ADVISORY COMMITTEE MEMBERSHIP  
APRIL, MAY, AND JUNE 2010

COMMITTEE	VAC	MEMBERS RECENTLY LEFT	MEMBERS NEWLY ADDED
		<p>Mary DeGroot Inovis Regional Technical Manager (Supervisor/Mgr/Nonminority)</p>	
		<p>Randy Olson Connection Strategies Enterprises, In Account Executive (Supervisor/Mgr/Nonminority)</p>	
		<p>Kelli Kwiatkowski Wisconsin Physicians Services, Inc. Senior Enterprise Security Engineer (Supervisor/Mgr/Nonminority)</p>	
		<p>Tim Van Ryzin Harley Davidson Motor, Co. Manager, IT Audit and Control (Supervisor/Mgr/Minority)</p>	
		<p>Gary Eppinger Rockwell Automation, Inc. Director Global Security (Supervisor/Mgr/Nonminority)</p>	

REPORT ON ADVISORY COMMITTEE MEMBERSHIP  
APRIL, MAY, AND JUNE 2010

<b>COMMITTEE</b>	<b>VAC</b>	<b>MEMBERS RECENTLY LEFT</b>	<b>MEMBERS NEWLY ADDED</b>
		Adam Lance P&H Mining Equipment Network Security Analyst (Supervisor/Mgr/Nonminority)	
		Mark Chapman Chapman Technology Group, Inc. President (Supervisor/Mgr/Nonminority)	
		Chris Schmit IFS NA I.S. Manager (Supervisor/Mgr/Nonminority)	
		Ralph Chapman United Government Services, LLC. Information Security Specialist (Labor/Nonminority)	
		Jeff Nelson Compuware Corporation Network Analyst (Labor/Nonminority)	

REPORT ON ADVISORY COMMITTEE MEMBERSHIP  
APRIL, MAY, AND JUNE 2010

COMMITTEE	VAC	MEMBERS RECENTLY LEFT	MEMBERS NEWLY ADDED
INTERIOR DESIGN 11 members    4 grad(s)	0	Linda H. Richmond Richmond Interior Designs Interior Designer (Supervisor/Mgr/Nonminority)	

REPORT ON ADVISORY COMMITTEE MEMBERSHIP  
APRIL, MAY, AND JUNE 2010

COMMITTEE	MEMBERS RECENTLY VAC	MEMBERS RECENTLY LEFT	MEMBERS NEWLY ADDED
IT COMPUTER SUPPORT SPECIALIST 13 members    3 grad(s)	0		<p>Jason Wischer Thomson Reuters Service Desk Manager (Supervisor/Mgr/Nonminority)</p> <p>Wendy Klemp Time Warner Cable Supervisor, Help Desk (Supervisor/Mgr/Nonminority)</p> <p>Lester Best Kohl's Department Store Service Delivery Problem Manager (Supervisor/Mgr/Nonminority)</p> <p>Ericka Ehman Robert Half Technology Account Executive (Supervisor/Mgr/Nonminority)</p> <p>Susanne Delcuze TMP Directional Marketing Technologies Services Specialist (Labor/Nonminority)</p>

REPORT ON ADVISORY COMMITTEE MEMBERSHIP  
APRIL, MAY, AND JUNE 2010

COMMITTEE	MEMBERS RECENTLY VAC	MEMBERS RECENTLY LEFT	MEMBERS NEWLY ADDED
			Joseph W. Kmoch Milwaukee Public Schools Educational Consultant (Consult/Nonminority)
			Jennifer LM Hawkins University of Wisconsin - Milwaukee Academic Advisor (Consult/Nonminority)
			Barry Jondahl Master Lock Company Director, Infrastructure & Operations (Supervisor/Mgr/Nonminority)
			Eric Kinnard Ron's Computer World Technician (Labor/Nonminority)
			Jennifer Anderson Manpower Director Client Support (Supervisor/Mgr/Nonminority)

REPORT ON ADVISORY COMMITTEE MEMBERSHIP  
APRIL, MAY, AND JUNE 2010

COMMITTEE	VAC	MEMBERS RECENTLY LEFT	MEMBERS NEWLY ADDED
			<p>Joel Gradisnik WE Engergies IT Service Management Consultant (Supervisor/Mgr/Nonminority)</p>
			<p>Bud Moore MBT, LLC IT Manager (Supervisor/Mgr/Nonminority)</p>
			<p>Lisa Livesey Bucyrus International Senior Help Desk Supervisor (Supervisor/Mgr/Nonminority)</p>
IT NETWORK SPECIALIST 1 members      0 grad(s)	8		<p>Robert M. Cole Thomson Reuters Systems Engineer (Labor/Nonminority)</p>
IT PROGRAMMER/ANALYST 1 members      0 grad(s)	8		<p>Jennifer LM Hawkins University of Wisconsin - Milwaukee Academic Advisor (Consult/Nonminority)</p>

**REPORT ON ADVISORY COMMITTEE MEMBERSHIP  
APRIL, MAY, AND JUNE 2010**

<b>COMMITTEE</b>	<b>VAC</b>	<b>MEMBERS RECENTLY LEFT</b>	<b>MEMBERS NEWLY ADDED</b>
MANAGEMENT DEVELOPMENT 11 members    6 grad(s)	0		
MARKETING 9 members    6 grad(s)	0	David Tietyen MSOE Resource Person (Labor/Nonminority)	Janis Geldon Sony Computer Entertainment Merchandising Account Representati (Supervisor/Mgr/Nonminority)
		Kathy Schwab Milwaukee Brewers Baseball Club Senior Director of Marketing (Supervisor/Mgr/Nonminority)	Ylonda Glover Tri-Success Management Institute Inc Strategy Management Consultant /Pri (Supervisor/Mgr/Minority)
		Markita Jefferson WTMJ, Inc. Sales Representative (Supervisor/Mgr/Minority)	
OFFICE TECHNOLOGY 9 members    2 grad(s)	0		
PARALEGAL 8 members    4 grad(s)	1		

REPORT ON ADVISORY COMMITTEE MEMBERSHIP  
APRIL, MAY, AND JUNE 2010

COMMITTEE	VAC	MEMBERS RECENTLY LEFT	MEMBERS NEWLY ADDED
PHOTOGRAPHY 15 members    5 grad(s)	0		Lori Foy RDA Milwaukee Unknown (Nonminority)  Jeffery Dobbs Mike Crivello's Cameras Studio Equipment Sales (Labor/Nonminority)  Troy Forrest Kohls Corp Unknown (Labor/Nonminority)
REAL ESTATE 10 members    0 grad(s)	0		
RETAIL MANAGEMENT/FASHION MARKETING 7 members    3 grad(s)	2	Rayshaun Jackson Goodwill Industries Supervisor (Supervisor/Mgr/Minority)	

**REPORT ON ADVISORY COMMITTEE MEMBERSHIP**  
**APRIL, MAY, AND JUNE 2010**

<b>COMMITTEE</b>	<b>VAC</b>	<b>MEMBERS RECENTLY LEFT</b>	<b>MEMBERS NEWLY ADDED</b>
<b>SUPPLY CHAIN MANAGEMENT</b> 14 members    2 grad(s)	0	William Kellner J C P Logistics LP Transportation Manager (Supervisor/Mgr/Nonminority)	John Chapin Harley-Davidson Supply Base Manager (Supervisor/Mgr/Nonminority)
		Jeff Lauterbach Pro Driver Leasing Sales Representative (Supervisor/Mgr/Nonminority)	Denise Mankiewicz ISM - Milwaukee Senior Buyer (Supervisor/Mgr/Nonminority)
			Steven Gahr Quad Graphics Contact Manager (Supervisor/Mgr/Nonminority)
			Mike Grimm Res Manufacturing Materials Manager (Supervisor/Mgr/Nonminority)
			Phil Skowbo South East Wisconsin Manufactures Executive Coach + Business Improve (Supervisor/Mgr/Nonminority)

REPORT ON ADVISORY COMMITTEE MEMBERSHIP  
APRIL, MAY, AND JUNE 2010

COMMITTEE	MEMBERS RECENTLY VAC	MEMBERS RECENTLY LEFT	MEMBERS NEWLY ADDED
			Eric Noel JCP Logistics, LP Outbound Processing Manager (Supervisor/Mgr/Nonminority)
			Rashid Ramez Rockwell Automation Rockwell Automation (Supervisor/Mgr/Nonminority)
			Glen Bridgewater Tax Airfreight, Inc. Unknown (Supervisor/Mgr/Nonminority)
			Michael Walz Palermo's Pizza VP - Operations (Supervisor/Mgr/Nonminority)
			Mike Czernicki All Modes Logistics Controller (Supervisor/Mgr/Nonminority)

REPORT ON ADVISORY COMMITTEE MEMBERSHIP  
APRIL, MAY, AND JUNE 2010

COMMITTEE	VAC	MEMBERS RECENTLY LEFT	MEMBERS NEWLY ADDED
VI-COM/COMPUTER GRAPHICS 15 members    6 grad(s)	0		<p>Gretchen Thomas Hanson Dodge Creative Director, User Experience (Labor/Nonminority)</p> <p>John Mosey GE Healthcare Global Channel Lead (Supervisor/Mgr/Nonminority)</p> <p>Ben Reed Versant Unknown (Labor/Nonminority)</p> <p>Brad Manderscheid None Freelance Developer (Supervisor/Mgr/Nonminority)</p> <p>James Newell Fullhouse Interactive Manager, Interface Development (Labor/Nonminority)</p>

BUSINESS, GRAPHIC ARTS, & INFORMATION TECHNOLOGY DIVISION

**HEALTH OCCUPATIONS**

REPORT ON ADVISORY COMMITTEE MEMBERSHIP  
APRIL, MAY, AND JUNE 2010

<b>COMMITTEE</b>	<b>VAC</b>	<b>MEMBERS RECENTLY LEFT</b>	<b>MEMBERS NEWLY ADDED</b>
ANESTHESIA TECHNOLOGY 9 members      4 grad(s)	0	Rita Lockett Children Hospital Anesthesia Technician (Labor/Minority)	Guillermo Hernandez Clement J. Zablocki Veterans Affairs  (Labor/Minority)
ASSOCIATE DEGREE NURSING 8 members      1 grad(s)	1		Patricia Stockhausen Wheaton Franciscan Healthcare - No Education Manager (Supervisor/Mgr/Nonminority)

REPORT ON ADVISORY COMMITTEE MEMBERSHIP  
APRIL, MAY, AND JUNE 2010

COMMITTEE	VAC	MEMBERS RECENTLY LEFT	MEMBERS NEWLY ADDED
CARDIOVASCULAR TECHNOLOGY 11 members    2 grad(s)	0	Jennifer Elsner Waukesha Memorial Hospital Echocardiographer (Labor/Minority)	
		Jessica Kelly Waukesha Memorial Hospital Cardiovascular Technician (Labor/Nonminority)	
		Renee Haynes St. Luke's Medical Center Echocardiographer (Labor/Minority)	
		Jenny Smoody Waukesha Memorial Hospital Registered Nurse (Labor/Nonminority)	
CLINICAL LABORATORY TECHNICIAN PHLEBOTOMY 10 members    0 grad(s)	0		
DENTAL ASSISTANT 10 members    4 grad(s)	0		

**REPORT ON ADVISORY COMMITTEE MEMBERSHIP**  
**APRIL, MAY, AND JUNE 2010**

<b>COMMITTEE</b>	<b>VAC</b>	<b>MEMBERS RECENTLY LEFT</b>	<b>MEMBERS NEWLY ADDED</b>
DENTAL HYGIENE 7 members      3 grad(s)	2	Michael E. McGinn McGinn LaCourt Family Dentistry D.D.S (Supervisor/Mgr/Nonminority)	
DENTAL LABORATORY TECHNOLOGY 6 members      4 grad(s)	3		
DIETETIC TECHNICIAN/DIETARY MANAGER 12 members      5 grad(s)	0		
FUNERAL SERVICE 9 members      5 grad(s)	0		
HEALTH UNIT COORDINATOR 11 members      3 grad(s)	0		

REPORT ON ADVISORY COMMITTEE MEMBERSHIP  
APRIL, MAY, AND JUNE 2010

COMMITTEE	VAC	MEMBERS RECENTLY LEFT	MEMBERS NEWLY ADDED
MEDICAL ASSISTANT 4 members      1 grad(s)	5		<p>Mary Pipkin Medical College of WI Nurse Manager OB/GYN Clinic (Supervisor/Mgr/Nonminority)</p> <p>Della Vaughner Southside MA (Labor/Minority)</p> <p>Malisa Grall Lakeshore Medical MA (Labor/Nonminority)</p>
MEDICAL CODING 10 members      3 grad(s)	0		
MEDICAL INTERPRETER 7 members      0 grad(s)	2		
NURSING ASSISTANT 6 members      1 grad(s)	3		

**REPORT ON ADVISORY COMMITTEE MEMBERSHIP**  
**APRIL, MAY, AND JUNE 2010**

<b>COMMITTEE</b>	<b>VAC</b>	<b>MEMBERS RECENTLY LEFT</b>	<b>MEMBERS NEWLY ADDED</b>
OCCUPATIONAL THERAPY ASSISTANT 11 members    7 grad(s)	0		Stephanie Baumgartner Dominiczak Therapy Associates, LLC Occupational Therapist (Labor/Nonminority)
OPTICIANRY SCIENCE 9 members    3 grad(s)	0		
PHARMACY TECHNICIAN 10 members    3 grad(s)	0		Laura Alar Columbia St. Mary's Pharmacy Manager (Supervisor/Mgr/Nonminority)
PHYSICAL THERAPIST ASSISTANT 9 members    4 grad(s)	0		
PRACTICAL NURSING 6 members    3 grad(s)	3		
RADIOGRAPHY 12 members    4 grad(s)	0		
RENAL DIALYSIS TECHNICIAN 9 members    9 grad(s)	0		

**REPORT ON ADVISORY COMMITTEE MEMBERSHIP**  
**APRIL, MAY, AND JUNE 2010**

<b>COMMITTEE</b>	<b>VAC</b>	<b>MEMBERS RECENTLY LEFT</b>	<b>MEMBERS NEWLY ADDED</b>
RESPIRATORY CARE 6 members      3 grad(s)	3	Christina Pano Aurora St. Luke's Medical Center Education Coordinator (Supervisor/Mgr/Nonminority)	
SURGICAL TECHNOLOGY 14 members      6 grad(s)	0		
HEALTH OCCUPATIONS DIVISION			
<b><u>LIBERAL ARTS &amp; SCIENCES</u></b>			
CHEMICAL TECHNICIAN 13 members      5 grad(s)	0	Michael Mohs RBP Chemical Technology Inc. Technical Director (Supervisor/Mgr/Nonminority)	
EARLY CHILDHOOD EDUCATION 14 members      3 grad(s)	0		
HUMAN SERVICE ASSOCIATE 13 members      4 grad(s)	0		
INTERPRETER TECHNICIAN 6 members      0 grad(s)	3		
MUSIC OCCUPATIONS 10 members      1 grad(s)	0		

REPORT ON ADVISORY COMMITTEE MEMBERSHIP  
APRIL, MAY, AND JUNE 2010

<b>COMMITTEE</b>	<b>VAC</b>	<b>MEMBERS RECENTLY LEFT</b>	<b>MEMBERS NEWLY ADDED</b>
TEACHER EDUCATION TRACK 13 members    1 grad(s)	0		David Weingrod Milwaukee Public Schools Service Learning Coordinator (Labor/Nonminority)
LIBERAL ARTS & SCIENCES DIVISION			
<b><u>PRE-COLLEGE</u></b>			
PRE-COLLEGE EDUCATION 10 members    0 grad(s)	0		
PRE-COLLEGE DIVISION			
<b><u>TECHNOLOGY &amp; APPLIED SCIENCES</u></b>			
AIR CONDITIONING REFRIGERATION 14 members    8 grad(s)	0		
APPLIANCE TECHNICIAN 8 members    1 grad(s)	1		
ARCHITECTURAL TECHNOLOGY 10 members    3 grad(s)	0		
AUTOMOBILE/AUTO BODY SERVICING 17 members    4 grad(s)	0		
AUTOMOTIVE TECHNOLOGY 6 members    0 grad(s)	3		

**REPORT ON ADVISORY COMMITTEE MEMBERSHIP**  
**APRIL, MAY, AND JUNE 2010**

<b>COMMITTEE</b>	<b>VAC</b>	<b>MEMBERS RECENTLY LEFT</b>	<b>MEMBERS NEWLY ADDED</b>
AVIATION MECHANICS 11 members    2 grad(s)	0		
BIOMEDICAL ELECTRONICS TECHNOLOGY 12 members    6 grad(s)	0		Terry White Waukesha Memorial Hospital Biomed Tech (Labor/Nonminority)
BRICKLAYING AND MASONRY 7 members    4 grad(s)	2		
CARPENTERS & CABINETMAKERS 7 members    1 grad(s)	2		
CIVIL ENGINEERING TECHNOLOGY 7 members    2 grad(s)	2		
COMPUTER ELECTRONICS TECHNOLOGY 5 members    1 grad(s)	4		
CRIMINAL JUSTICE LAW ENFORCEMENT 10 members    4 grad(s)	0		
DIESEL & POWERTRAIN SERVICING 16 members    3 grad(s)	0		

**REPORT ON ADVISORY COMMITTEE MEMBERSHIP**  
**APRIL, MAY, AND JUNE 2010**

<b>COMMITTEE</b>	<b>VAC</b>	<b>MEMBERS RECENTLY LEFT</b>	<b>MEMBERS NEWLY ADDED</b>
ELECTRICITY - DIPLOMA 8 members      2 grad(s)	1		
ELECTRONIC ENGINEERING TECHNOLOGY 10 members      5 grad(s)	0		
ELECTRONIC TECHNOLOGY COMMUNICATION 5 members      1 grad(s)	4		Kevin Kukowski WMVS/WMVT Manager - Television Engineering & (Supervisor/Mgr/Nonminority)
ELECTRONIC TECHNOLOGY CONTROLS AUTOMATION 11 members      4 grad(s)	0	Bradley J. Stokke WEM Automation Systems Engineer (Labor/Nonminority)	Jim Lysaught WEM Automation VP of Engineering & Service (Supervisor/Mgr/Nonminority)
			Kent Aschenbrenner Milwaukee Public Television Senior Engineer (Labor/Nonminority)
FIRE SCIENCE/EMS 10 members      5 grad(s)	0		
LINE MECHANIC 5 members      0 grad(s)	4		

**REPORT ON ADVISORY COMMITTEE MEMBERSHIP**  
**APRIL, MAY, AND JUNE 2010**

<b>COMMITTEE</b>	<b>VAC</b>	<b>MEMBERS RECENTLY LEFT</b>	<b>MEMBERS NEWLY ADDED</b>
MACHINE TOOL & COMPUTER NUMERICAL CONTROL 4 members      0 grad(s)	5		
MACHINE TRADES APPRENTICE 8 members      1 grad(s)	1		
MAINTENANCE & INDUSTRIAL ELECTRICIAN APPRENTICE 9 members      2 grad(s)	0		
MECHANICAL DRAFTING & DESIGN 10 members      4 grad(s)	0		
PAINTING & DECORATING APPRENTICE 6 members      2 grad(s)	3		
POWER ENGINEERING & BOILER OPERATOR 9 members      3 grad(s)	0	James W. Smith City of Milwaukee Boiler Inspector I (Labor/Nonminority)	Mark Uhrman Milwaukee Repertory Theater Chief Engineer (Labor/Nonminority)
			Randy Purek City of Milwaukee Boiler & Mechanical Safety Section I (Supervisor/Mgr/Nonminority)

REPORT ON ADVISORY COMMITTEE MEMBERSHIP  
APRIL, MAY, AND JUNE 2010

<b>COMMITTEE</b>	<b>VAC</b>	<b>MEMBERS RECENTLY LEFT</b>	<b>MEMBERS NEWLY ADDED</b>
PREPARATORY PLUMBING 9 members      1 grad(s)	0		
SHEET METAL APPRENTICE 9 members      5 grad(s)	0		
TOOL & DIE MAKING 9 members      3 grad(s)	0		
WELDING/WELD TECH 8 members      4 grad(s)	1		
TECHNOLOGY & APPLIED SCIENCES DIVISION			

**TELEVISION & VIDEO PRODUCTION**

TELEVISION VIDEO PRODUCTION 10 members      1 grad(s)	0		
TELEVISION & VIDEO PRODUCTION DIVISION			