

To access MATC applications (via VMWare View v 4.6)

Logging into VMware View v 4.6

Remote access to MATC applications is provided by our VMware View virtual desktop system. You can connect to different "pools" of virtual machines based on your needs and entitlements from any computer with Internet access.

UPDATE 5-23-2011: Because of a recent upgrade you will be required to upgrade your client. If you have not upgraded your client then you need to follow the steps in the documentation for client install.

Once you have installed the VMware View Client v 4.6 you can connect to the MATC desktops either using the shortcut desktop icon or the website <https://vdiweb.matc.edu>.

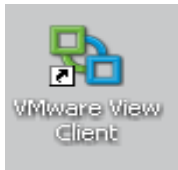
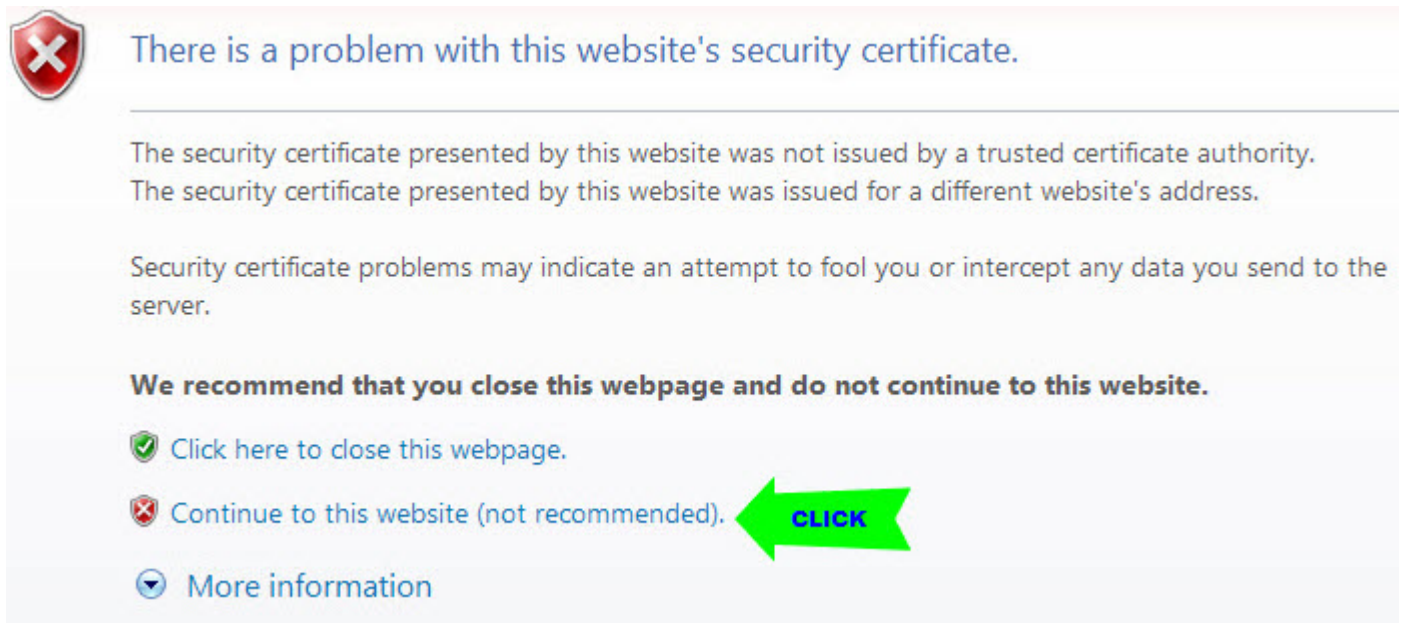
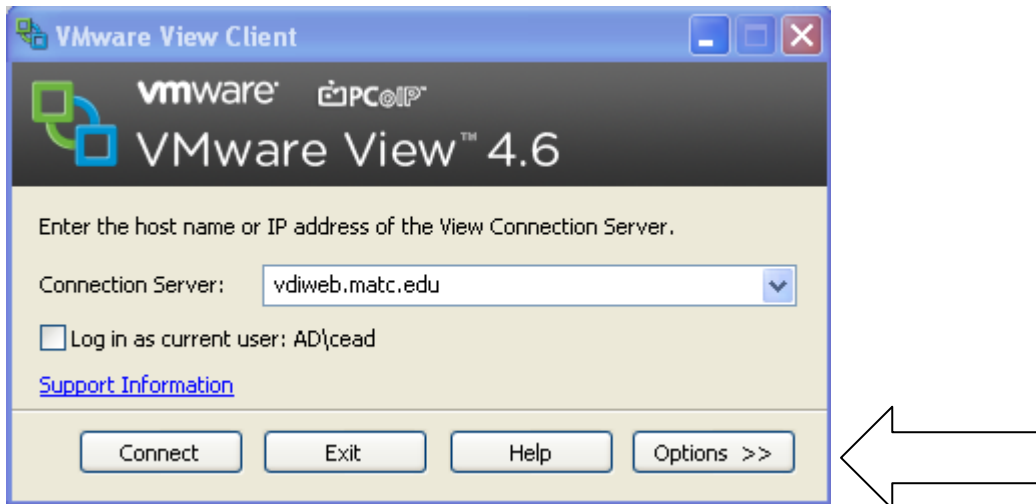


Figure 1 VMware View Client

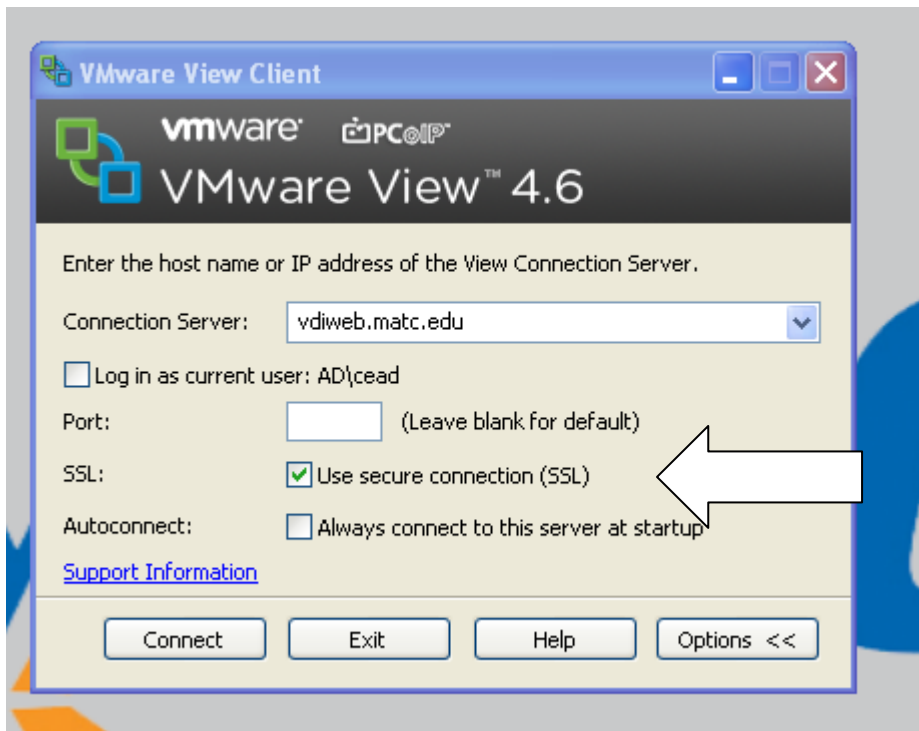
If prompted with a certificate warning:

A screenshot of a certificate warning dialog box. It features a red shield icon with a white 'X' on the left. The main text reads: "There is a problem with this website's security certificate." Below this, it explains: "The security certificate presented by this website was not issued by a trusted certificate authority. The security certificate presented by this website was issued for a different website's address." It then states: "Security certificate problems may indicate an attempt to fool you or intercept any data you send to the server." A bold recommendation follows: "We recommend that you close this webpage and do not continue to this website." Three options are listed: "Click here to close this webpage." (with a green checkmark), "Continue to this website (not recommended)." (with a red 'X' in a circle), and "More information" (with a blue downward arrow). A green arrow with the word "CLICK" points to the "Continue to this website" option.

If you choose to log in using the icon on the desktop the first screen that will appear is:

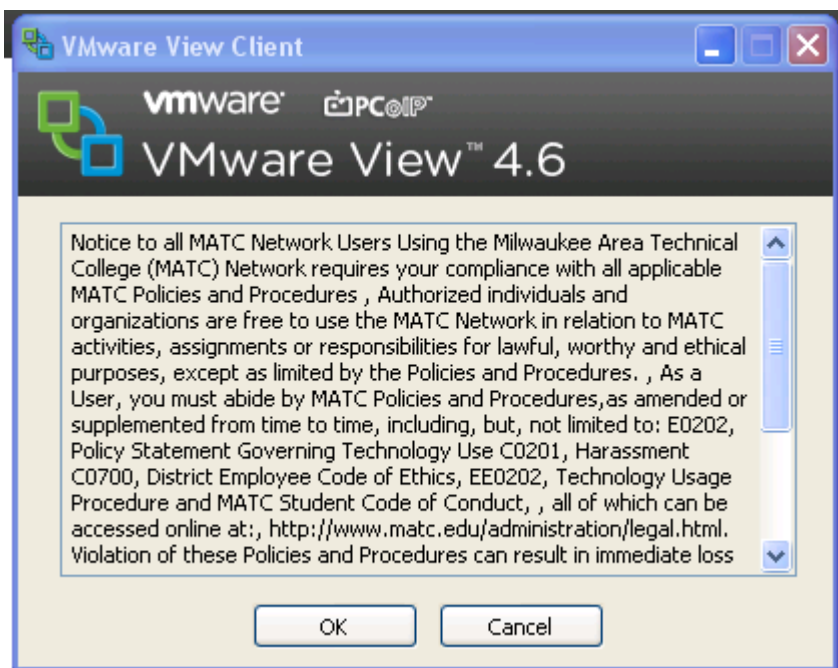


Confirm that the host name is *vdiweb.matc.edu*. If it is not, change it to *vdiweb.matc.edu*. Click on the Options button.

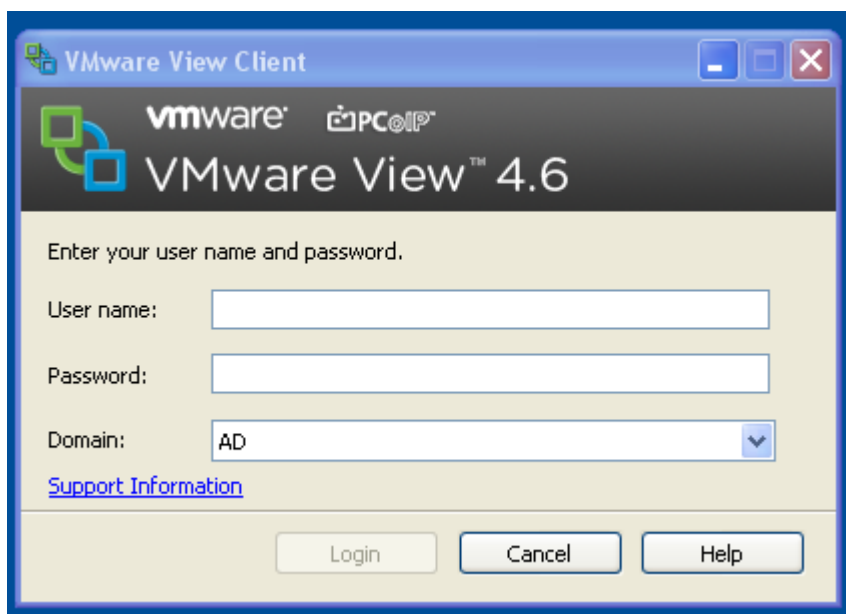


Confirm that “Use secure connection (SSL) is checked, and then click “Connect.”

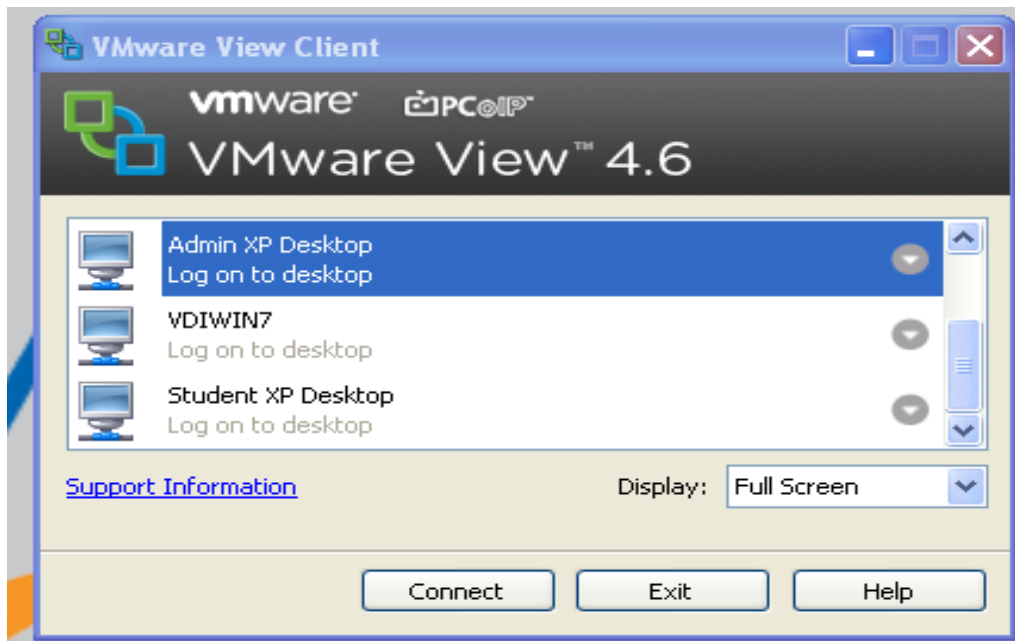
You will see the MATC security screen. Respond to the MATC Computer Use policy notice.



Next you will be prompted to enter your credentials and password.

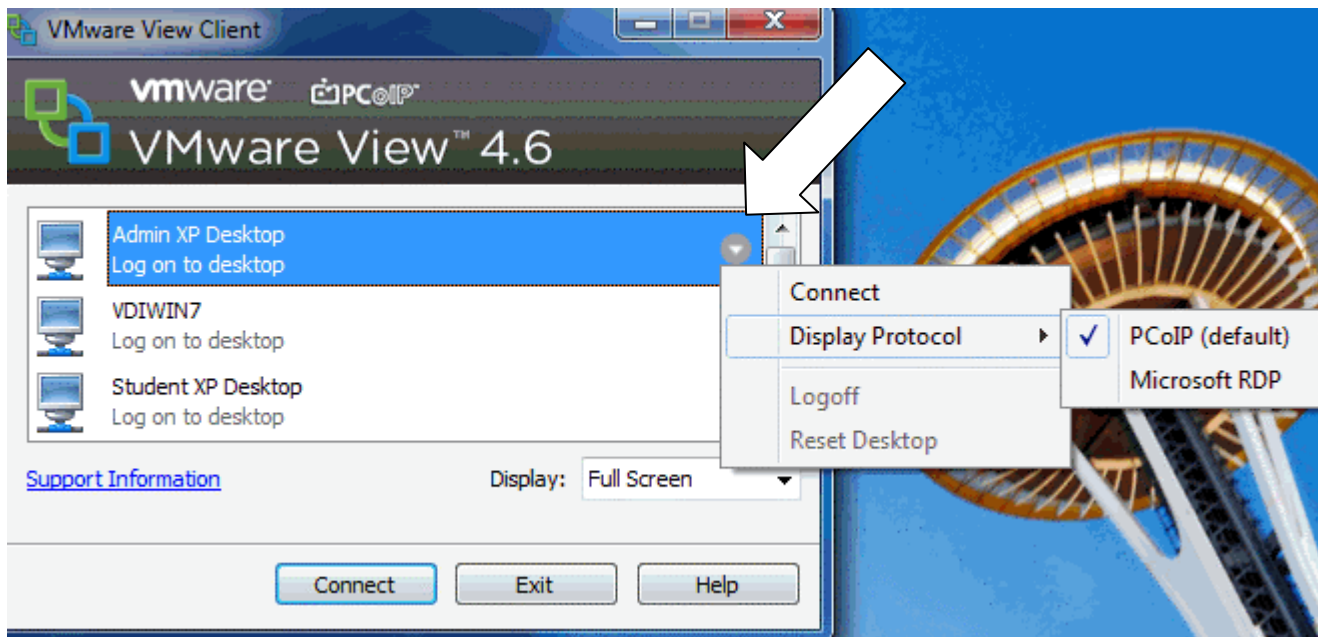


After a successful login you will be able to see different "pools" of virtual machines based on your needs and entitlements. Select the desktop of your choice and click Connect!

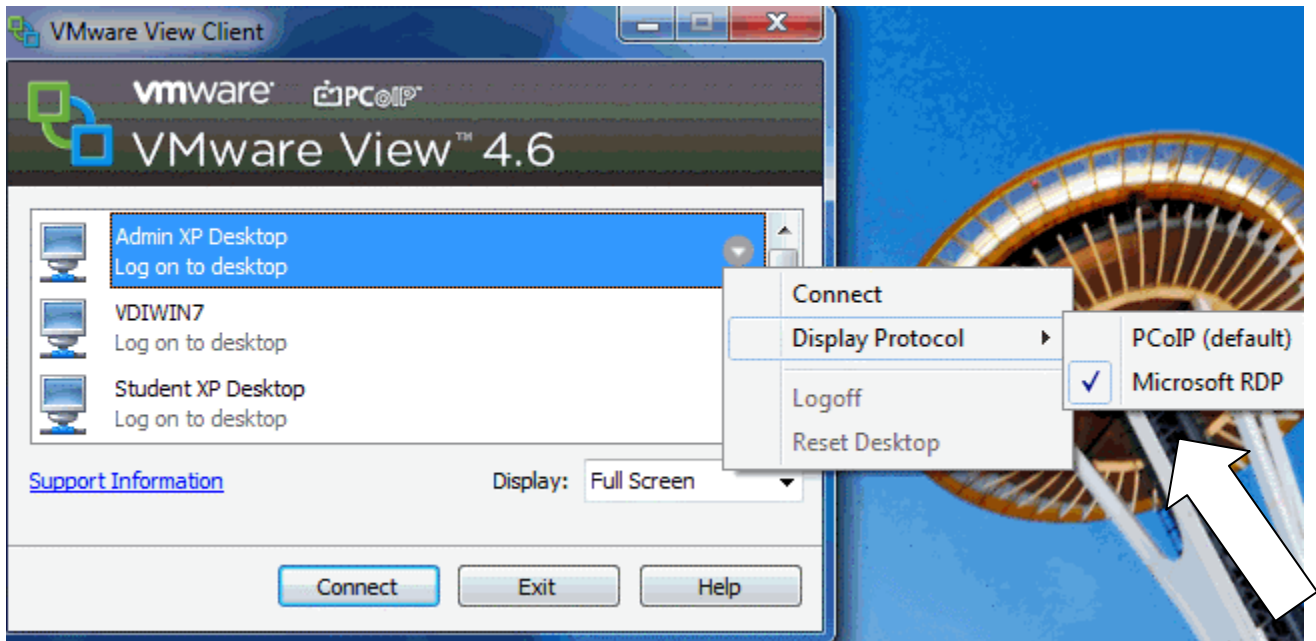


NOTE: To access the “local C:\ drive” on your physical computer, please do these additional steps prior to clicking on *Connect*.

Click on the little down arrow to the right of desktop of your choice to Display Protocol.



Move the checkmark from PCoIP (default) to “Microsoft RDP” to change protocol. RDP will now become the default protocol for this desktop even after you log out. To change the default back to PCoIP, please go through these steps again the next time that you log in.



Click on Connect...

