

2010 MATC Facts & Figures

Table of Contents

I. Enrollment Concepts	3
II. MATC Enrollments	9
III. Employee Breakdown	20
IV. Student Demographics & Perceptions	23
V. Tuition	33
VI. Education Attainment & Meeting Labor Force Needs	35
I. Graduates & Placement	50

I. Enrollment Concepts

MATC Addresses the Needs of Different Student Constituencies, Reflecting its Varied Mission

- Program Students (i.e., Those who formally applied and were accepted into a college program leading to graduation)

Associate Degree students

Technical Diploma students

College Transfer students

Apprentice students

- Non-Program Students (i.e., Those who have not formally applied)

Those Taking Only Continuing Ed Coursework

Those Taking Only Pre-College Coursework

Those Taking Only Program Coursework but not as a Program Student

Those Taking a Mix of Pre-College, Continuing Ed and/or Program Coursework

NOTE: Students pursuing a certificate can be either type

Counting Enrollments

There are two major measures of enrollment:

- *Head count*: The total number of registrants for a fiscal year (July 1 – June 30) or a term
- *FTE*: The number of full-time equivalencies within that total head count, where 1 FTE = 30 credits

FTE determines state aid, so it is often given greater importance than head count.

Counting Enrollments

There are two major measures of enrollment:

- Head count: The total number of registrants for a fiscal year (July 1 – June 30) or a term
- FTE: The number of full-time equivalencies within that total head count, where 1 FTE = 30 credits

FTE determines state aid, so it is often given greater importance than head count.

- *Head count* is affected most by district demographics, economic conditions and competition – e.g., having a “migration inflow” to sustain enrollment growth while successfully competing for students
- *FTE* is affected most by economic conditions – students having time and money to take credit coursework as work opportunities are expanded or curtailed

- MATC’s fiscal year (FY) enrollment is from mid-year to mid-year, spanning two calendar years
- FY2010 refers to enrollments accumulated for three terms: summer and fall terms of calendar year 2009 and spring term of 2010
- “Fall term 2010” in calendar year 2009 is referred to as “FA2010”

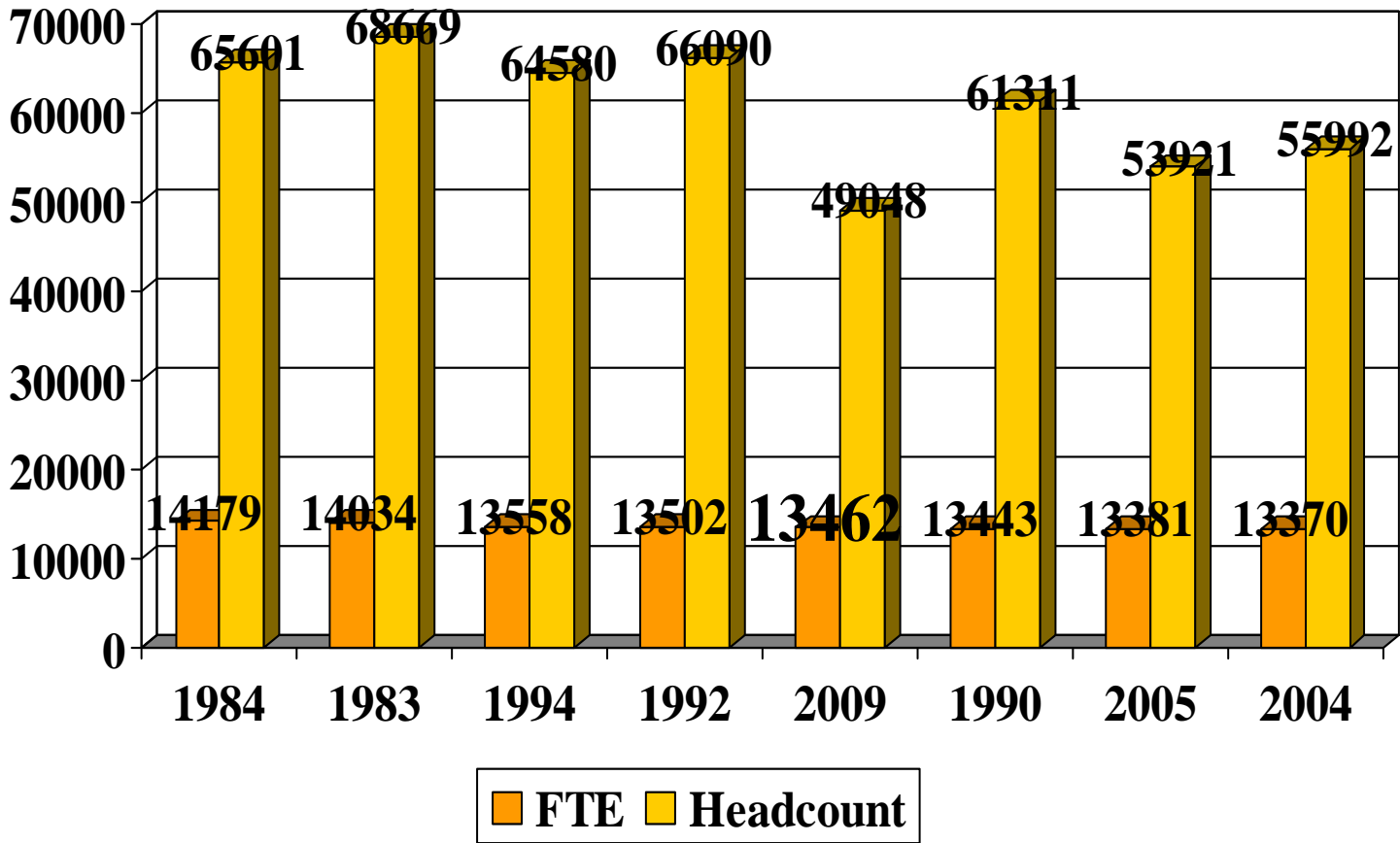
II. MATC Enrollments

FY2010 Enrollments Explode

- The deepening recession has dramatically affected enrollments at two-year colleges nationwide, as state funding has been severely curtailed (see Greg Allen's "Bleak Economy Squeezes Community Colleges," NPR, July 10, 2009)
- As of January 25, MATC's FTE enrollments reflect the national trend (relative to the previous year):
 - * Summer: +32%
 - * Fall: +14%
 - * Spring: +7%
 - * Overall (to date): +12%

***MATC's 2009 FTE was the
fifth highest in 28 years***

8 Highest Years Ranked by FTE:

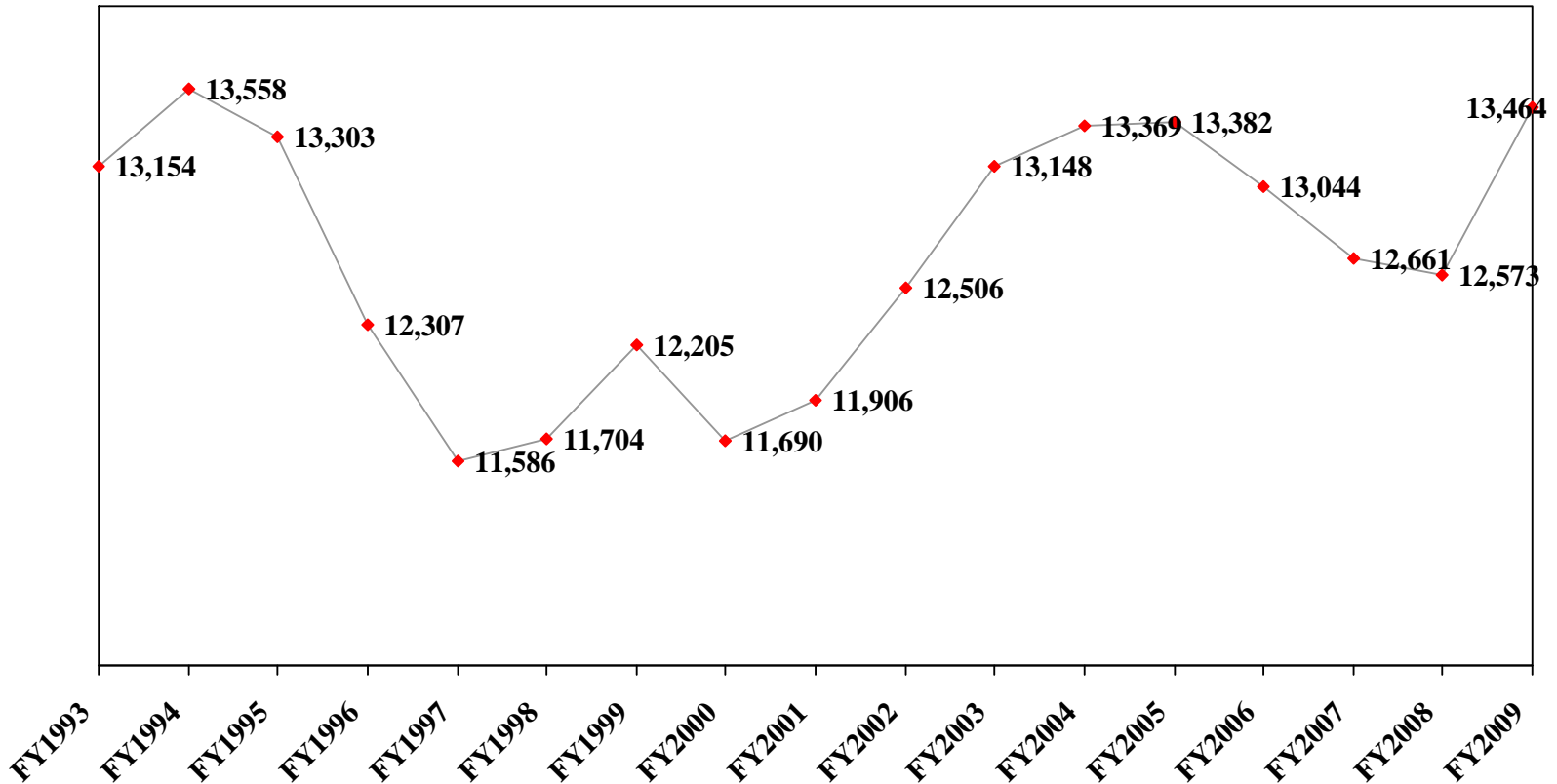


FTE Enrollment Trend

FY 1993 to FY 2009

Source: MATC CFER Report, based on WTCS Board Data;

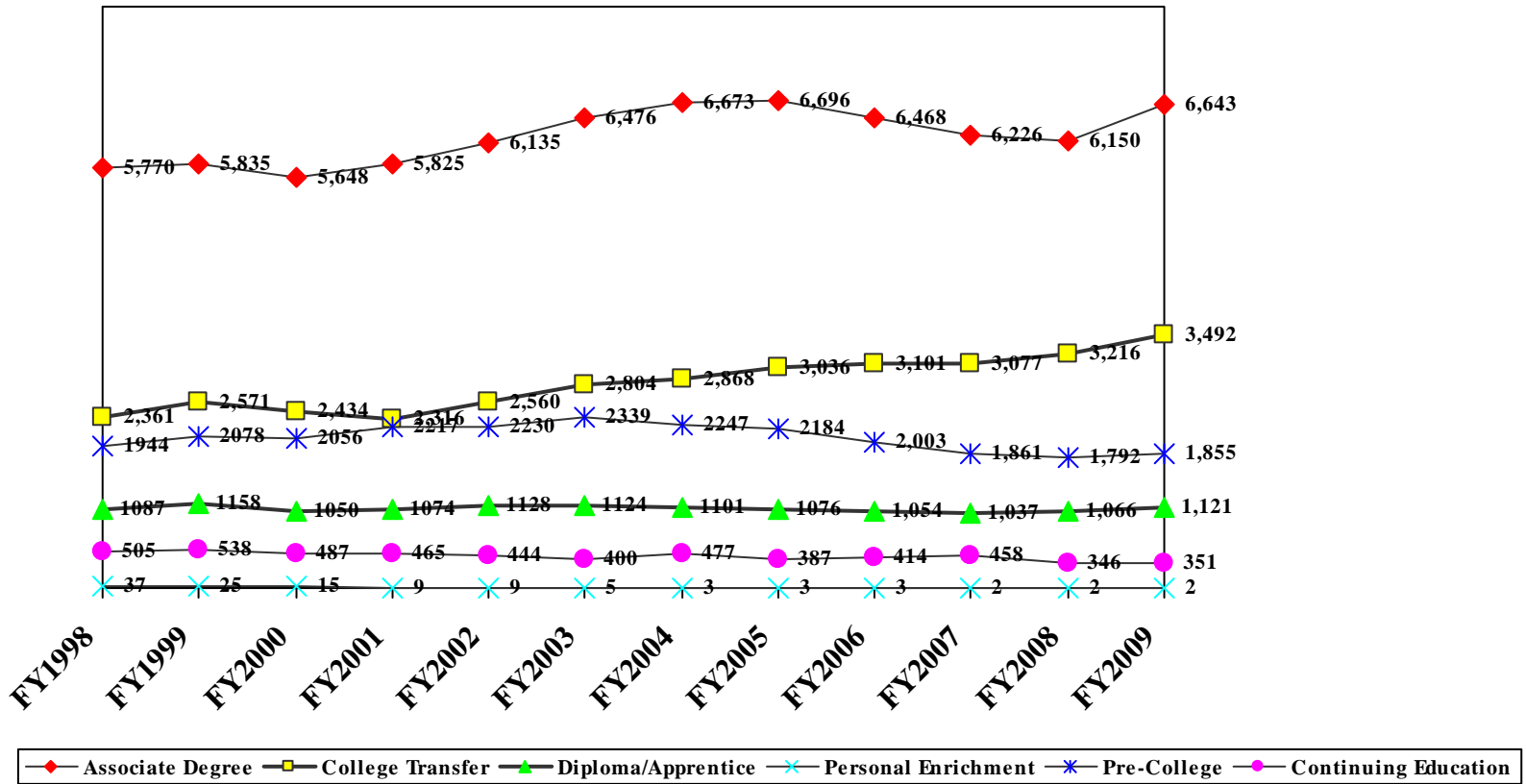
(NOTE: State-mandated methods for calculating FTE changed during this period. In the mid-1990s, changes meant a loss of approx. 300 FTE while a FY01 change in calculating FTE by course length meant some net FTE gain)



FTE Trends by Coursework Area: FY1998 – 2009

Based on Unduplicated Counts

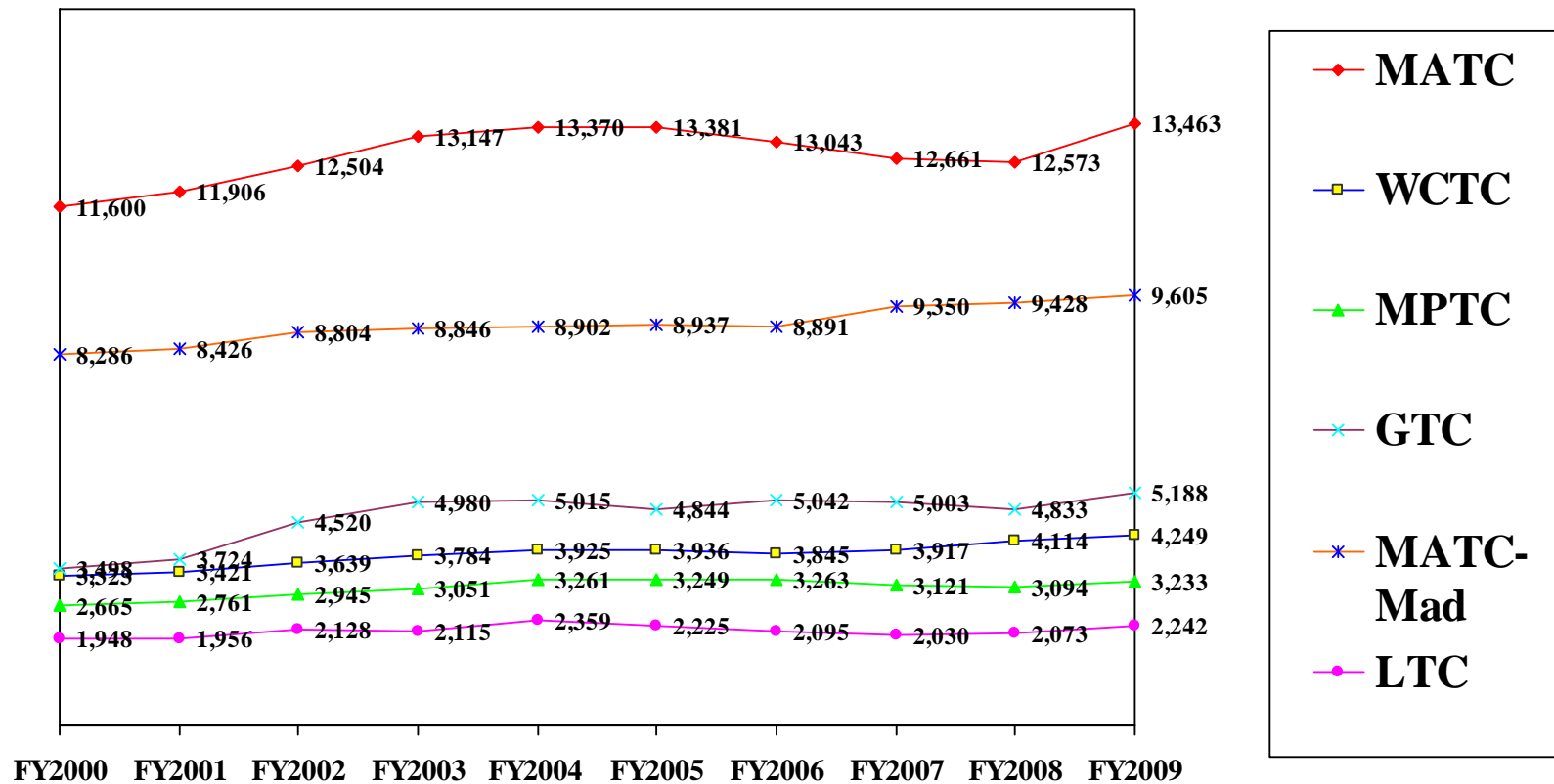
Source: Comprehensive Annual Financial Report



Comparative FTE Enrollment Trends For Selected Public Two-Year Colleges

FY 2000-FY 2009

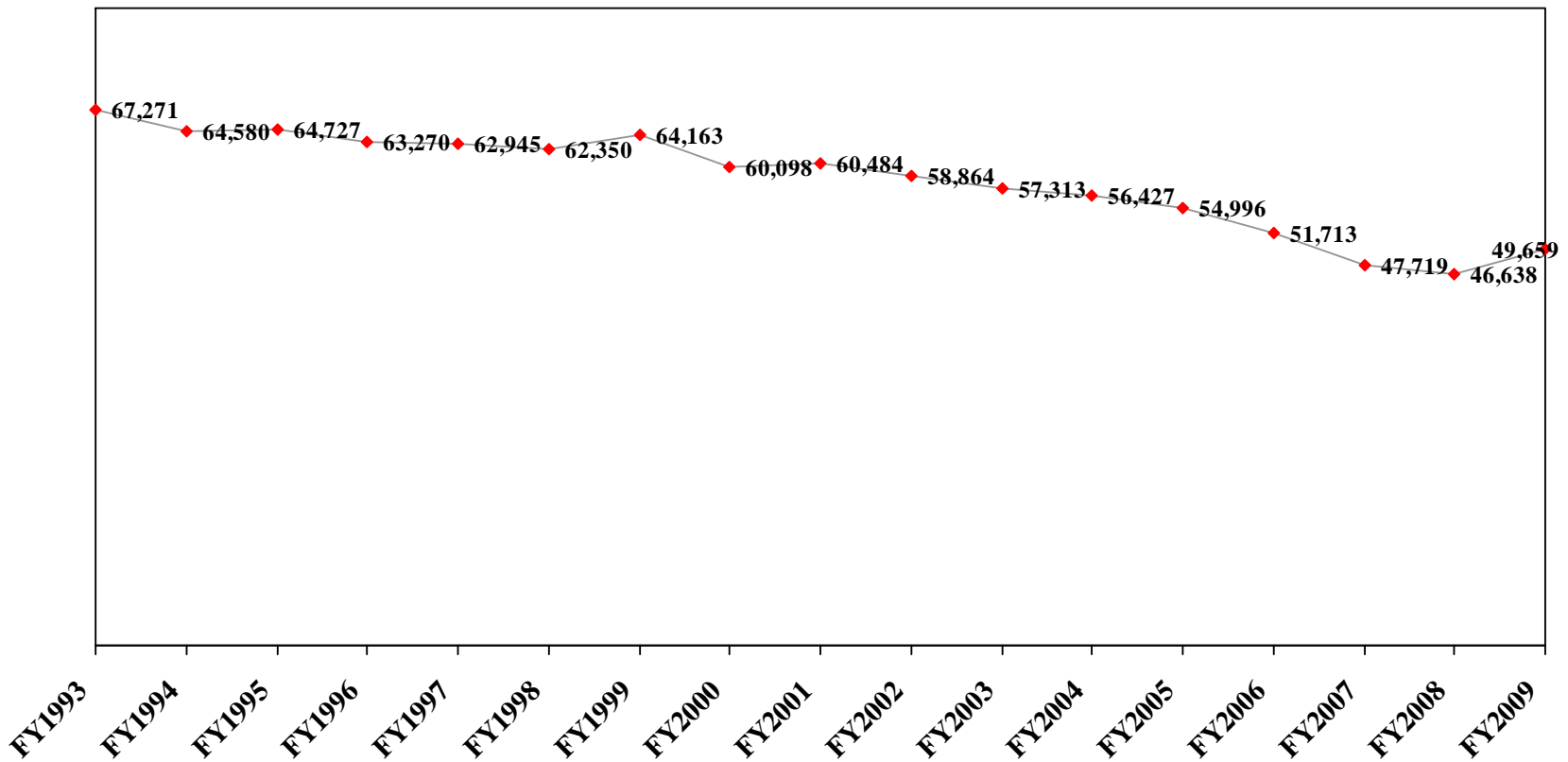
Source: WTCS Board Data



Enrollment Headcount Trend

FY 1993 to FY 2009

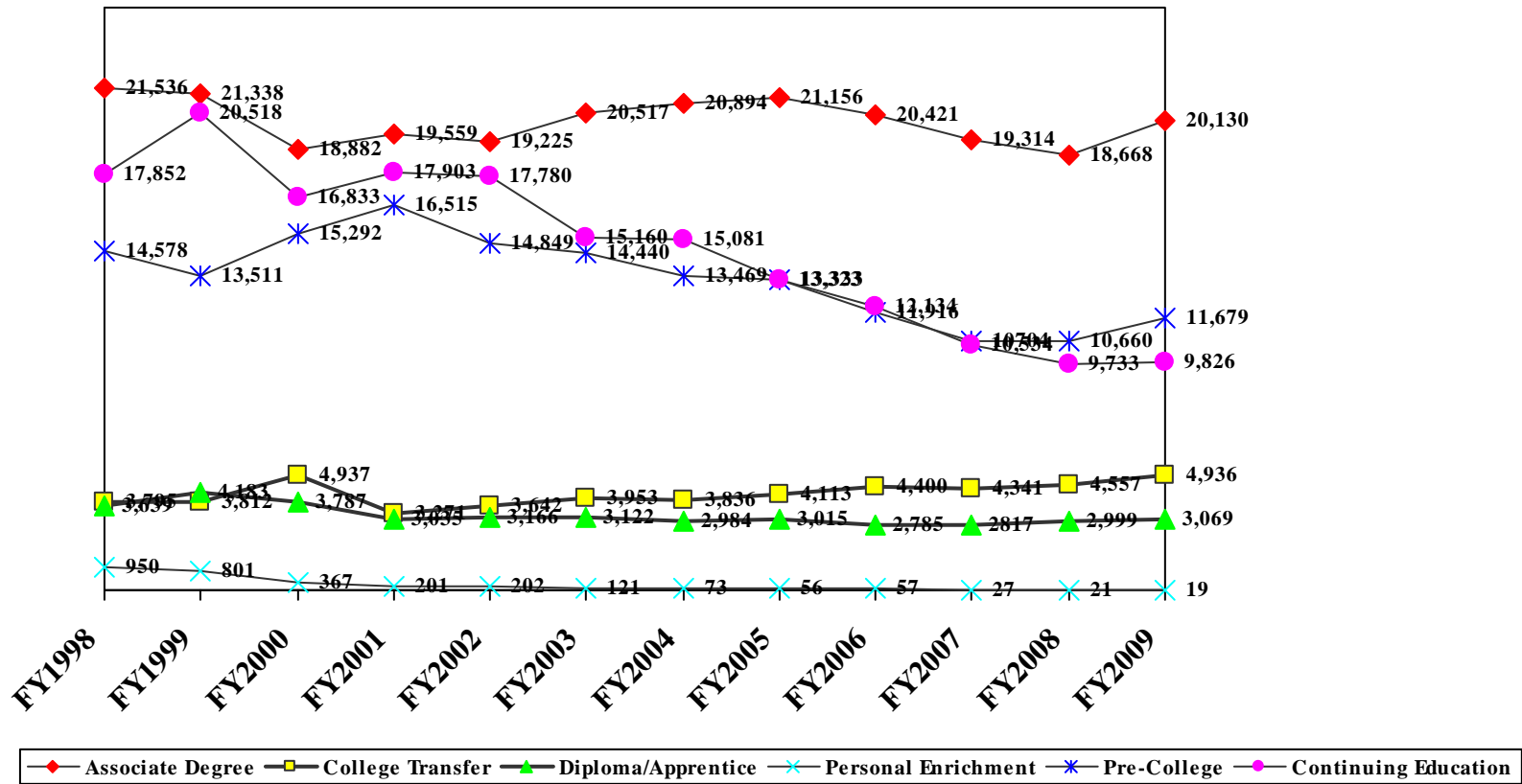
Source: MATC CFER Report, based on WTCS Board Data



Head Count Trends by Coursework Area: FY1998 – 2009

Based on Unduplicated Counts

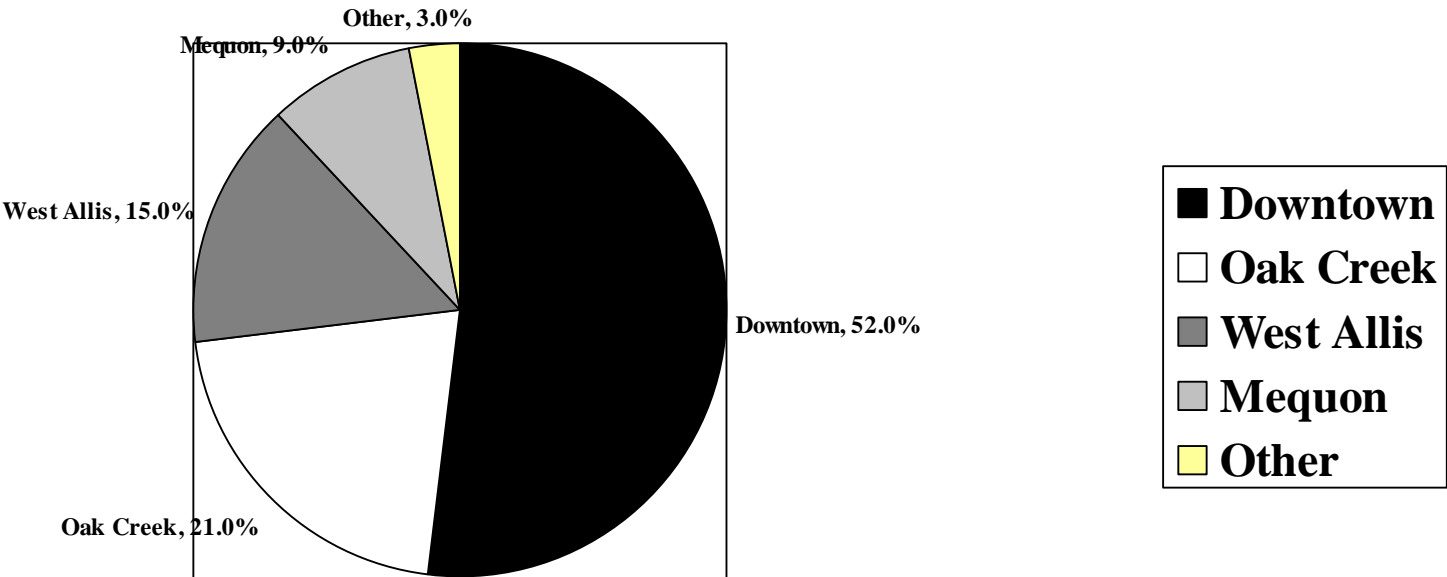
Source: Comprehensive Annual Financial Report



FY2009 Distribution of Head Count Enrollment By Major Campus Sites

Source: WTCS data (VE215514A report);

NOTE: Breakdown is computed based on duplicated counts between sites

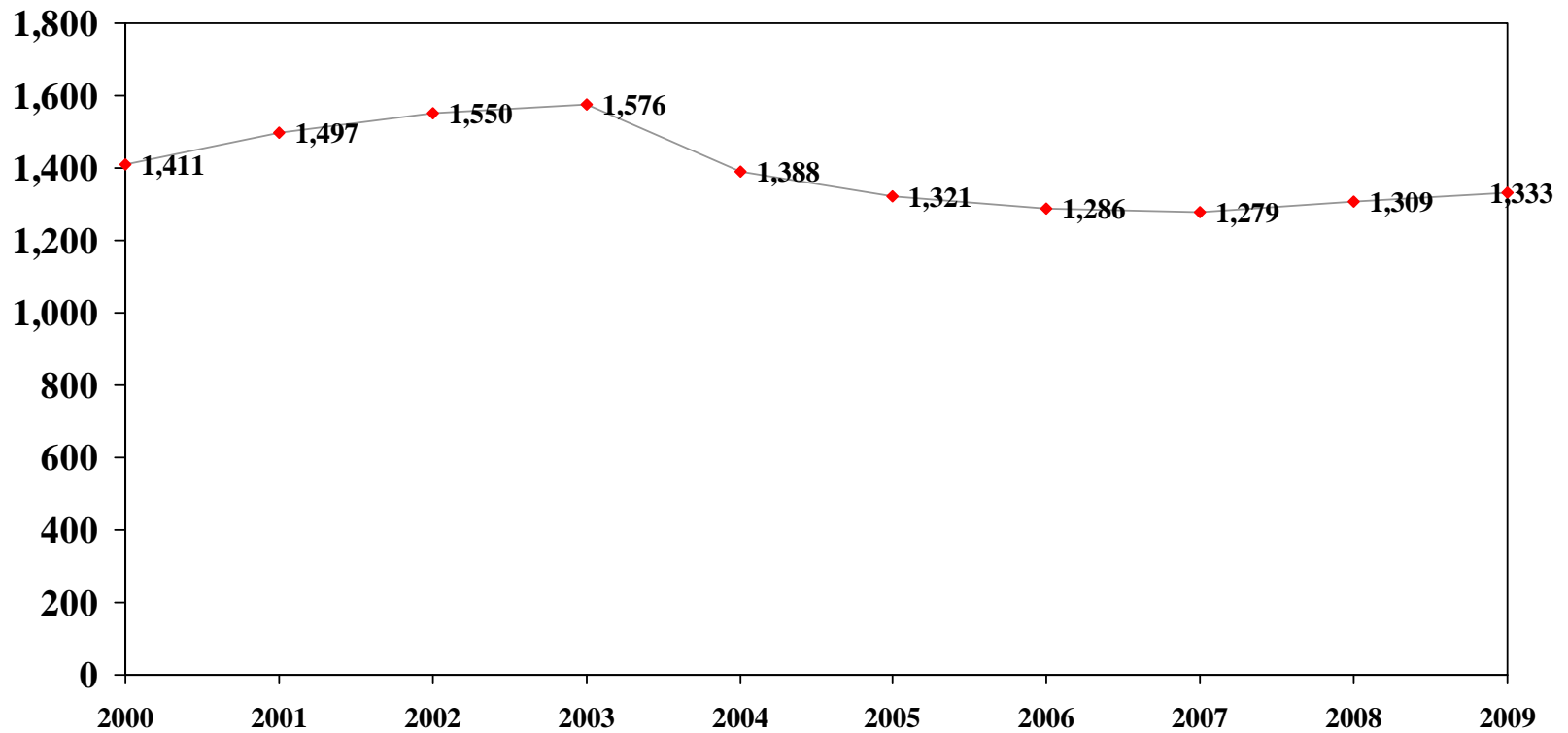


- *Reflecting the nature of two-year college students nationwide, one-quarter to one-third of program students each term attend full-time*
- *One in nine or ten of all students attend full time*

III. Employee Breakdown

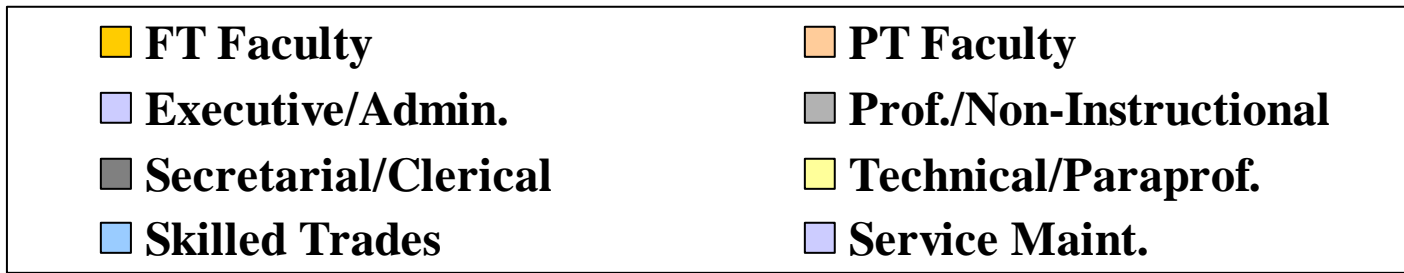
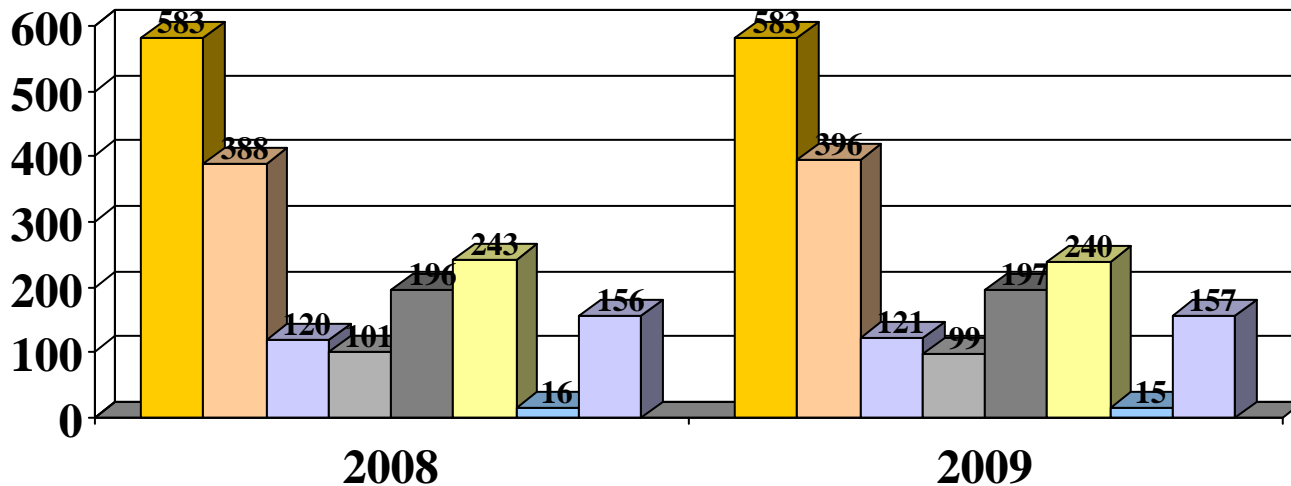
Number of Full-Time Employees: 2000-2009

Source: CAFR Report



Breakdown of Major Employee Categories

Source: 2009 CAFR Report



IV. Student Demographics & Perceptions

Student Age

- Following national trends, the average age of MATC students declined after 2000 with the influx of more direct-from-high school students and young adults seeking degrees (“the Baby-Boom Echo” or children of the Baby-Boom)
- The overall student median age dropped to 27 in FY2008 and FY2009; Nine years earlier, it had been 30
- Median ages in FY2009 vary with student type: e.g., college transfer and other post-secondary students (25) vs. continuing education (33) vs. personal enrichment (69)

- In addition to younger students, the proportion of minority students increased from 34% to 48% between 1998 and 2008, especially with rapid growth among Hispanics and Asians

(Data trends are computed among those reporting race / ethnic background)

FY2009 Racial Breakdown of Student Body

Percentages computed based on only those self-reporting

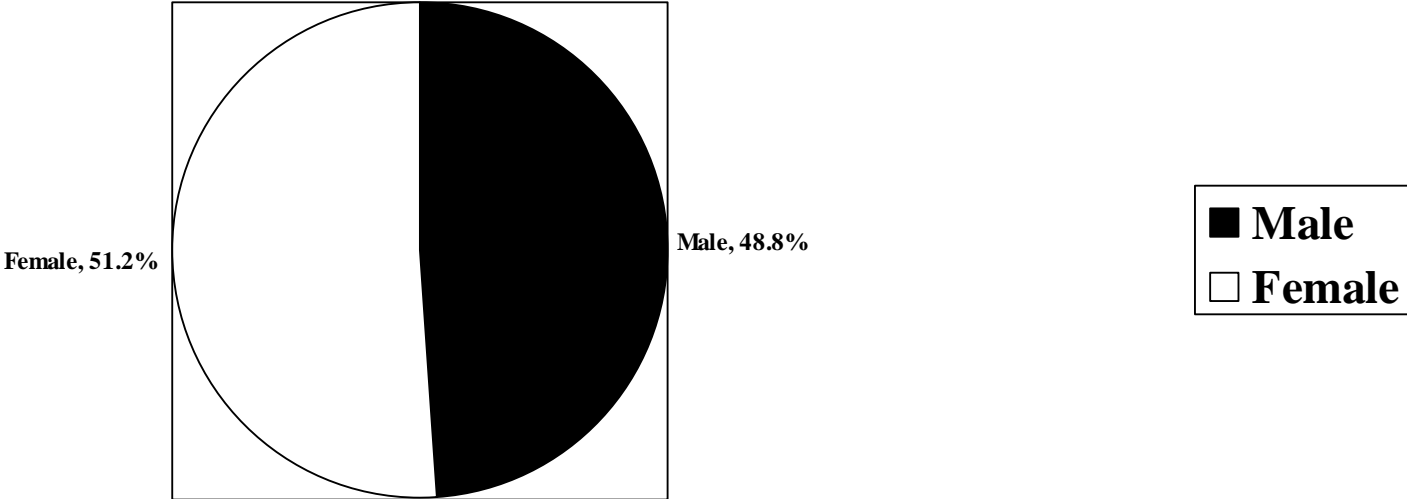
- White 52%
- African-American 28%
- Hispanic 14%
- Asian-American/Pac. Islander 4%
- American Indian 1%

Gender & Program Student Status

- While the overall student body is almost evenly divided along gender lines, program students are disproportionately female
- 51% of all FY2009 students were female
- 56% of FA2010 program students are women – 9,868 of 17,619 (on Sept.22, 2009)
- This implies degree/diploma program students are different in their gender make-up from skill-enhancing or basic skills non-program students

FY2009 Gender Breakdown of Student Body

Percentages computed based on only those self-reporting



Student Residency

About nine of ten MATC students reside within the five-county Metropolitan Area

Over one-half live in the City of Milwaukee and over three-quarters live in Milwaukee County

CASE STUDY:

Students' Municipality of Residence in FY07

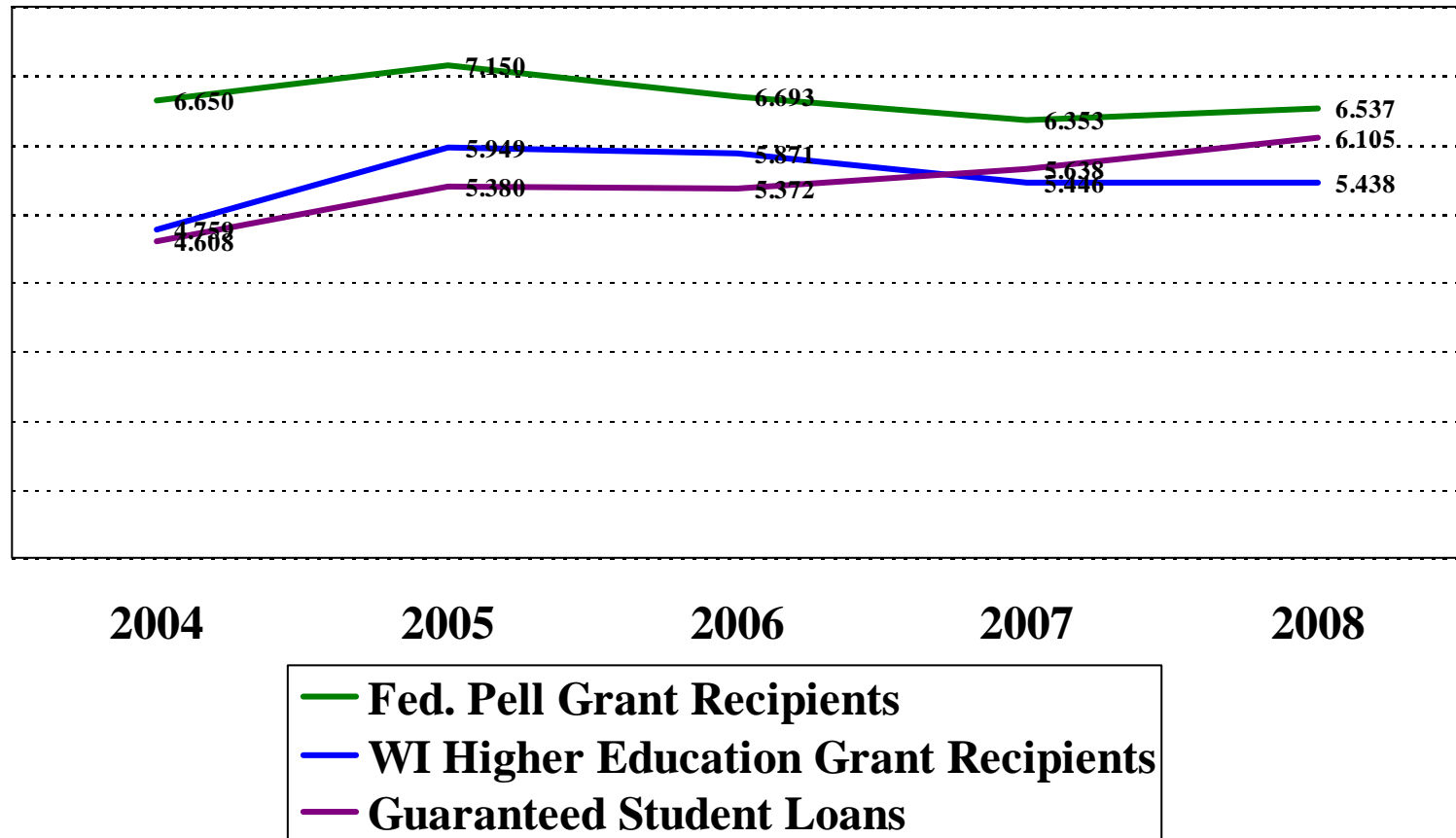
Source: Official WTCS data

• <u>Milwaukee County</u>		78%
-Milwaukee	57%	
-West Allis	4%	
-Oak Creek	3%	
-Greenfield	2%	
-Wauwatosa	2%	
-Franklin	2%	
-South Milwaukee	2%	
-Cudahy	1%	
• <u>Waukesha County</u>		5%
-New Berlin	1%	
• <u>Ozaukee County</u>		4%
-Mequon	1%	
• <u>Racine County</u>		3%
-Racine	2%	

Trend in Major Financial Aid Award *Recipients: FY04 – FY08*

Source: SSDW data

NOTE: FY application counts include Federal Pell grants, WI High Education grants and guaranteed student loans



Student Satisfaction Survey Research suggests as areas of strength...

- * Instructional quality and faculty availability;
- * Tuition as a good investment;
- * Payment convenience;
- * Registration convenience;
- * Computer accessibility, access and assistance;
- * Course practicality; and
- * Clear requirements regarding good academic standing

V. Tuition

FY2009 Tuition Costs Per Credit

- Associate Degree: \$97.05
- Technical Diploma: \$97.05
- Apprentice: \$97.05
- Vocational/Continuing Education: \$97.05
- Four-Year College Transfer: \$131.50
- Pre-College: Variable

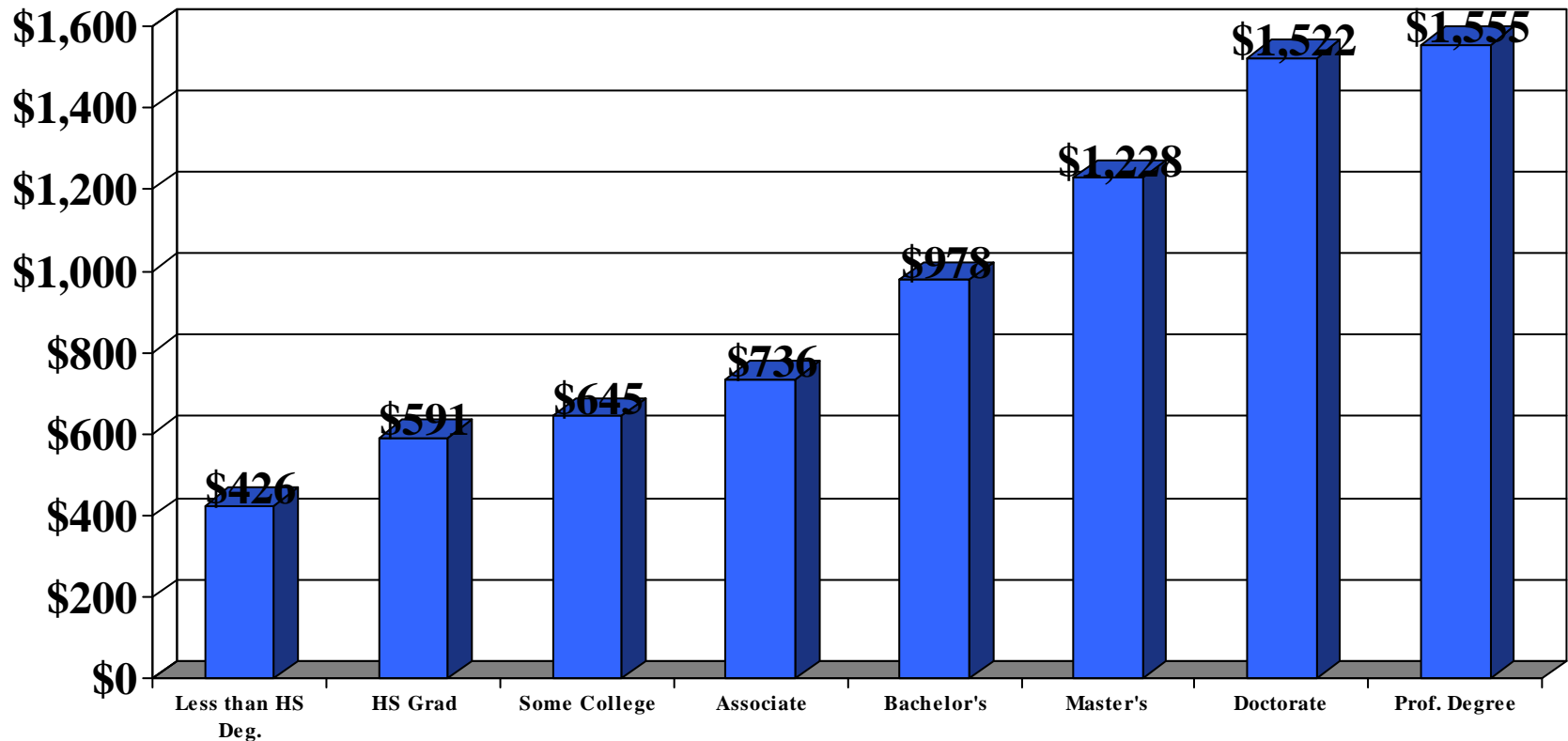
VI. Educational Attainment & Meeting Labor Force Needs

Educational attainment assures higher median earnings and more stable employment

Local economic conditions can strengthen or weaken that relationship

Educational attainment is strongly associated with median weekly earnings: 2008

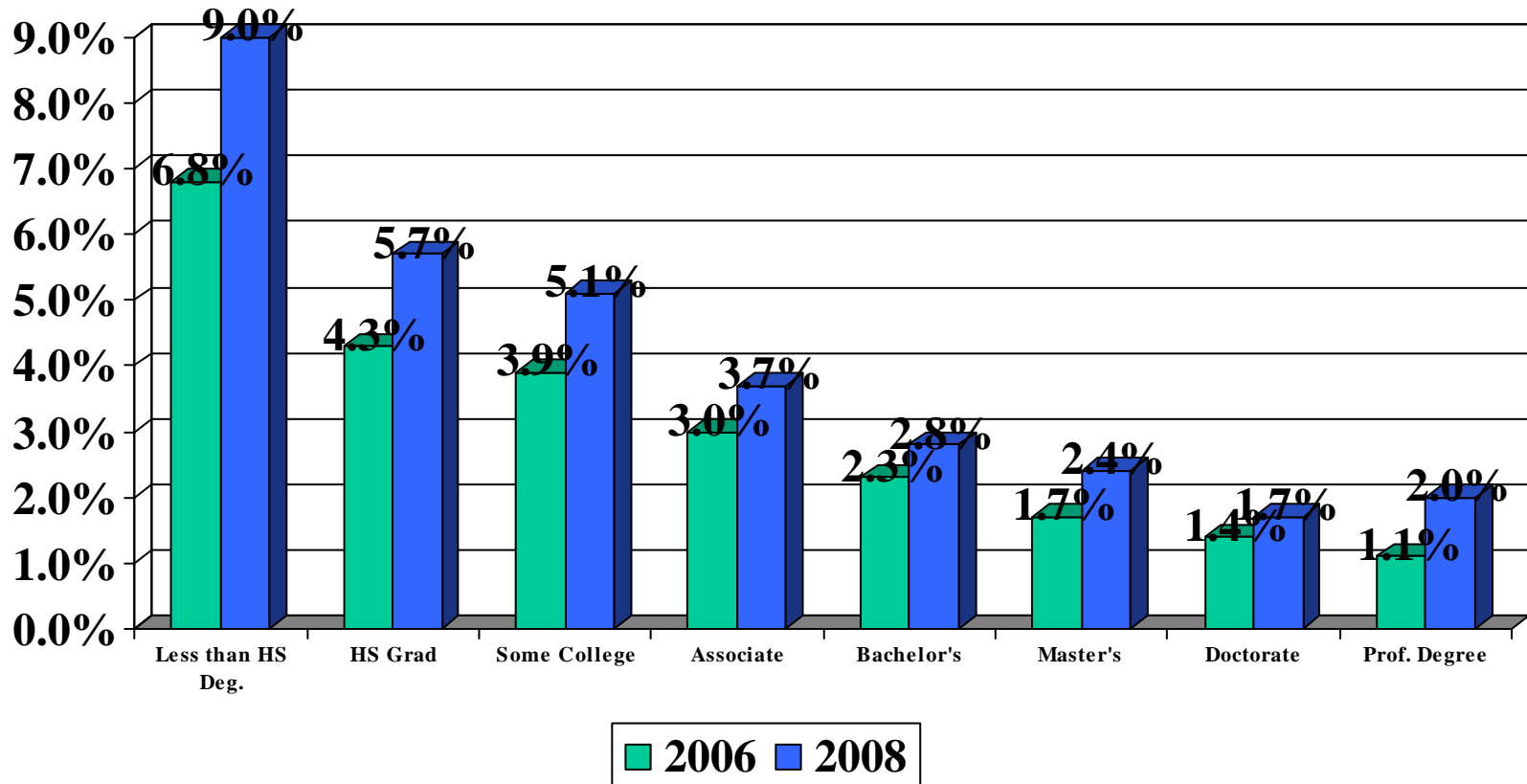
National Data Sources: Bureau of the Census; Bureau of Labor Statistics, 2008



Educational attainment is strongly associated with stable employment: 2006 vs. 2008

Unemployment Rate

National Data Sources: Bureau of the Census; Bureau of Labor Statistics, 2007 & 2009



Meeting Labor Force Demands

- In FY2010, MATC offered 64 associate, 47 diploma, 27 apprentice, and 73 certificate programs to meet workforce needs
- Given differing program sizes, a small number were “key program FTE generators”

New short-term programs in business, health and education were developed to meet labor force and community needs

Added for FY 07 and FY08 were ...

- Animation Associate Degree
- Adobe Creative Suite Digital Publishing Certificate (FY08)
- Wisconsin Infant Toddler Professional Credential (FY08)
- Wisconsin Professional Credential for Preschool teachers (FY08)
- “Express Ramp” – Welding Certificate in Flux Core (FY07)
- Flux Core Welding – “Express Ramp” (FY07)
- Deaf Awareness Certificate (FY07)
- American Indian Studies Certificate (FY08)
- Medical Coding Specialist Diploma (FY08)
- Desktop Publishing/Press Production Diploma (FY07)

Added for FY2009 and FY2010

- EMT-Intermediate Technician (30-531-6)
- IT Computer Simulation and Gaming (10-153-1)
- IT Network Specialist (10-150-1)
- Web Designer Diploma (31-206-1)
- Culinary Management Certificate
- Sustainability Operations Certificate
- Energy Engineering Technology Advanced Technical Certificate

Added for FY2011 will be ...

- Baking and Pastry Arts (10-314-1)
- Sustainable Facilities Operations (10-481-2)

These programs will have newly assigned names or numbers:

- Computer Simulation and Gaming (10-153-1)
- eBusiness Technology Specialist (10-135-3)
- Automotive Technology Comprehensive (10-602-6)
- Special Event Management (31-109-1)
- Food Service (31-316-1)

The current economic recession negatively affects state and local job projections for 2009 and beyond, especially short-term.

Metro Occupations with most Annual Projected Job Openings *Requiring Associate Degree/Post-Secondary Professional Training: 2006-2008*

Base: Employment of at least 200 in 2008

- Registered Nurses/Licensed Practical /Vocational Nurses (730, Associate or Bachelor degree, depending on job specifics)
- Nursing Aides, Orderlies and Attendants, 230)
- *Teacher Assistants* (160)
- Radiography Technologists and Technicians (60)
- Medical Records and Health Information Technicians (50)
- Medical Transcriptionists (50)
- Respiratory Specialists (40)
- Surgical Technologists (40)
- Physical Therapist Assistants (20)
- Diagnostic Medical Sonographers (20)
- Veterinary Technologist and Technicians (20)
- Occupational Therapists Assistants (10)
- *Manicurists and Pedicurists* (10)

Projected number of annual job openings are in parentheses

Highest Estimated Average Salaries for Area Jobs Requiring Associate Degree/Post-Secondary Professional Training: 2006

• Diagnostic Medical Sonographers	\$73,263
• Registered Nurses	\$59,071
• Dental Hygienists	\$54,833*
• Respiratory Therapists	\$52,066
• Radiography Techs & Technicians	\$51,750
• Aircraft Mechanics & Service Technicians	\$50,956
• Telecom Equipment Installers & Repairers	\$49,747
• Mechanical Engineering Technicians	\$48,290*
• Electrical & Electronics Drafters	\$47,631*
• Electrical & Electronics Repairers	\$47,197*

* denotes that the average salary is not designated as a 2006 estimate but as a 2005-2007 estimate

From Office of Economic Advisors, WI Dept. of Workforce Development, September 2007

Other Metro Positions with Most Annual Projected Job Openings *Requiring Baccalaureate Degree*, Partially Met Through Two Years of MATC Coursework: 2006-2008

Base: Employment of at least 200 in 2008

- Computer Software Engineers, Applications (160)
- Computer Systems Analysts (140)
- Preschool Teachers (Except Special Education) (110)
- Network Systems & Data Communications Analysts (90)
- Network & Computer Systems Administrators (80)
- Employment, Recruitment and Placement Specialists (60)
- Computer Software Engineers, Systems Software (60)
- Environmental Engineers (30)
- Computer Hardware Engineers (30)
- Database Administrators (30)
- Physician Assistants (30)

Projected number of annual job openings are in parentheses

From Office of Economic Advisors, WI Dept. of Workforce Development, September 2007

Highest Estimated Average Salaries for Area Jobs Requiring Baccalaureate Degree: 2006

- Physician Assistants \$83,105
- Biomedical Engineers \$82,964
- Computer Software Engineers (systems software) \$74,304
- Computer Software Engineers (applications) \$70,249
- Environmental Engineers \$66,793
- Computer Systems Analysts \$65,146
- Network & Computer Systems Administrators \$61,335
- Network Systems & Data Communications Analysts \$60,666

From Office of Economic Advisors, WI Dept. of Workforce Development, September 2007

Metro Occupations Losing Jobs That Require Associate Degree/Post-Secondary Professional Training: 2006 - 2008

Base: Employment of at least 50 in 2008

- Travel Agents (-60)
- Telecom Equipment Installers & Repairers (-30)
- Aircraft Mechanics & Service Technicians (-20)
- Pre-Press Technicians & Workers (-20)
- Forest & Conservation Technicians (-10)

Projected number of annual job losses by 2008 are in parentheses

From Office of Economic Advisors, WI Dept. of Workforce Development, September 2007

Job Openings Requiring the Training That MATC Provides Are Projected to Increase: 2006-2008

Source: WI Dept. of Workforce Development

Associate Degree: +3.2%

Post-Secondary Voc. Training: +1.5%

From Office of Economic Advisors, WI Dept. of Workforce Development, September 2007

VII. Graduation & Placement

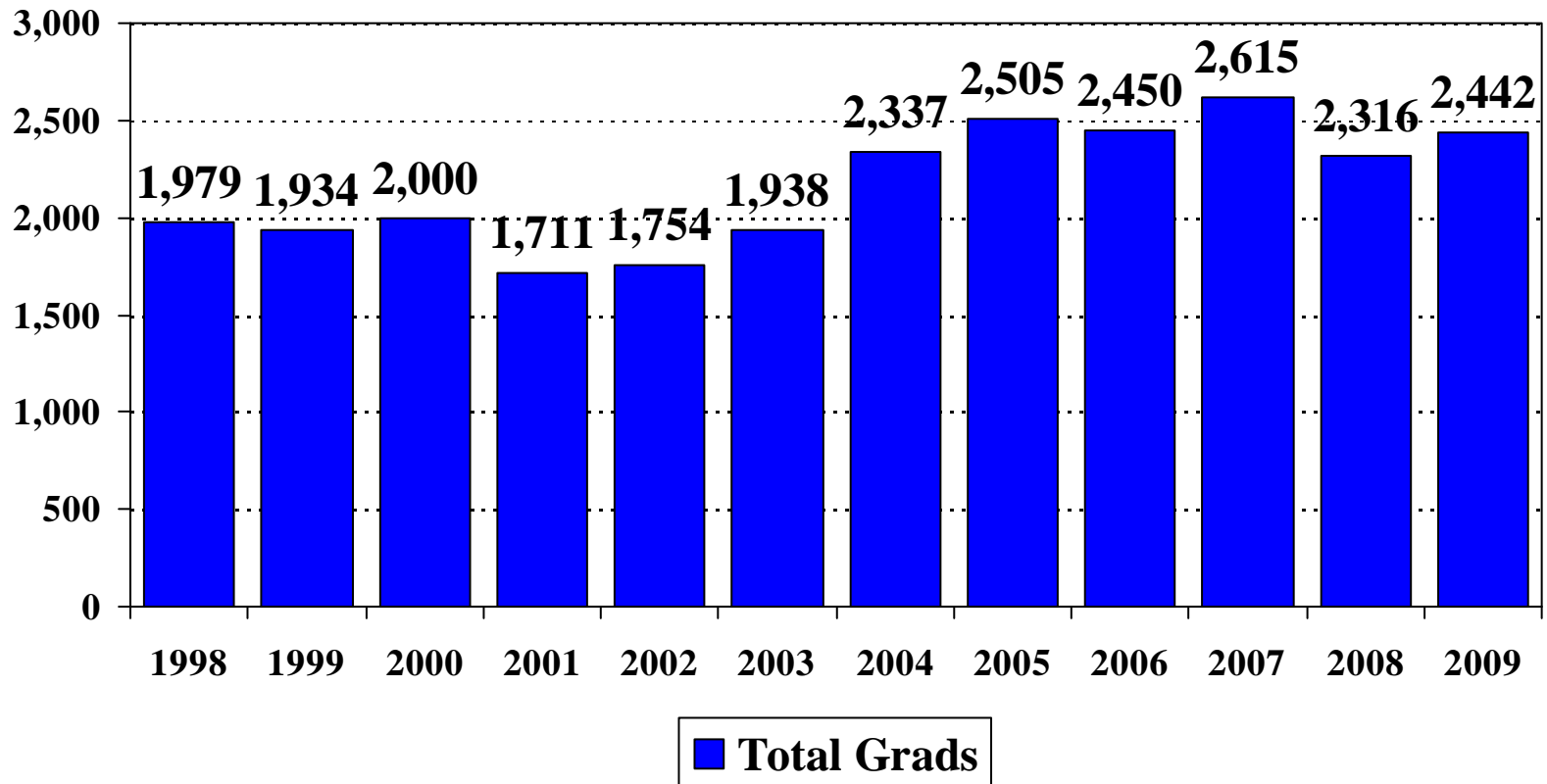
MATC Graduation Trends

- The number of program graduates follows the change in program student numbers; graduate numbers reflect earlier periods of program entry growth, stability and decline, and other factors affecting persistence and retention
- Among 2008 graduates, 88% were placed in jobs within six months of graduation and/or continue their education. 44% of those furthering their schooling were attending a four-year college
- Placement rates (six months after graduation) tend to reflect the metro labor market
- 2008 grads were satisfied with the training they received
- They worked a median of 40 hours a week
- 98% of FY08 grads were employed in Wisconsin, the great majority in the five-county area
- 2009 grad data will be available in May 2010

Trend Data on Graduates: 1998-2009

Associate Degree, College Transfer and Technical Diploma Programs

Source: 2009 Comprehensive Annual Financial Report

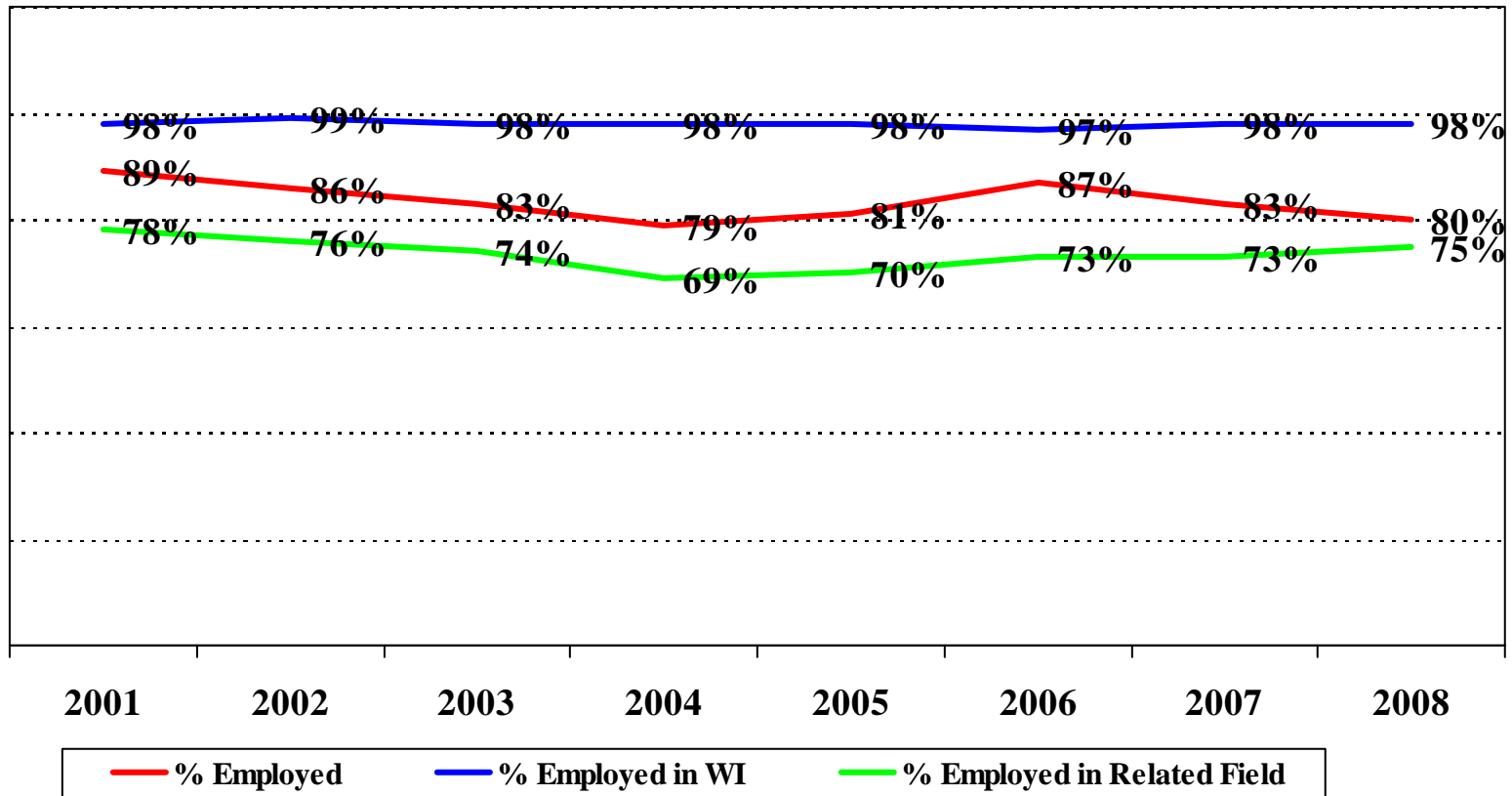


Graduates' Reasons for Attending: 2007 vs. 2008

	<u>2007</u>	<u>2008</u>
• Job Preparation	36%	32%
• Career Change	25%	27%
• Skill Improvement	13%	12%
• Prep. Further Education	18%	21%
• Personal Interest	6%	7%
• Other	2%	1%

MATC Graduate Employment: **FY2001-2008**

Employment Within Six Months



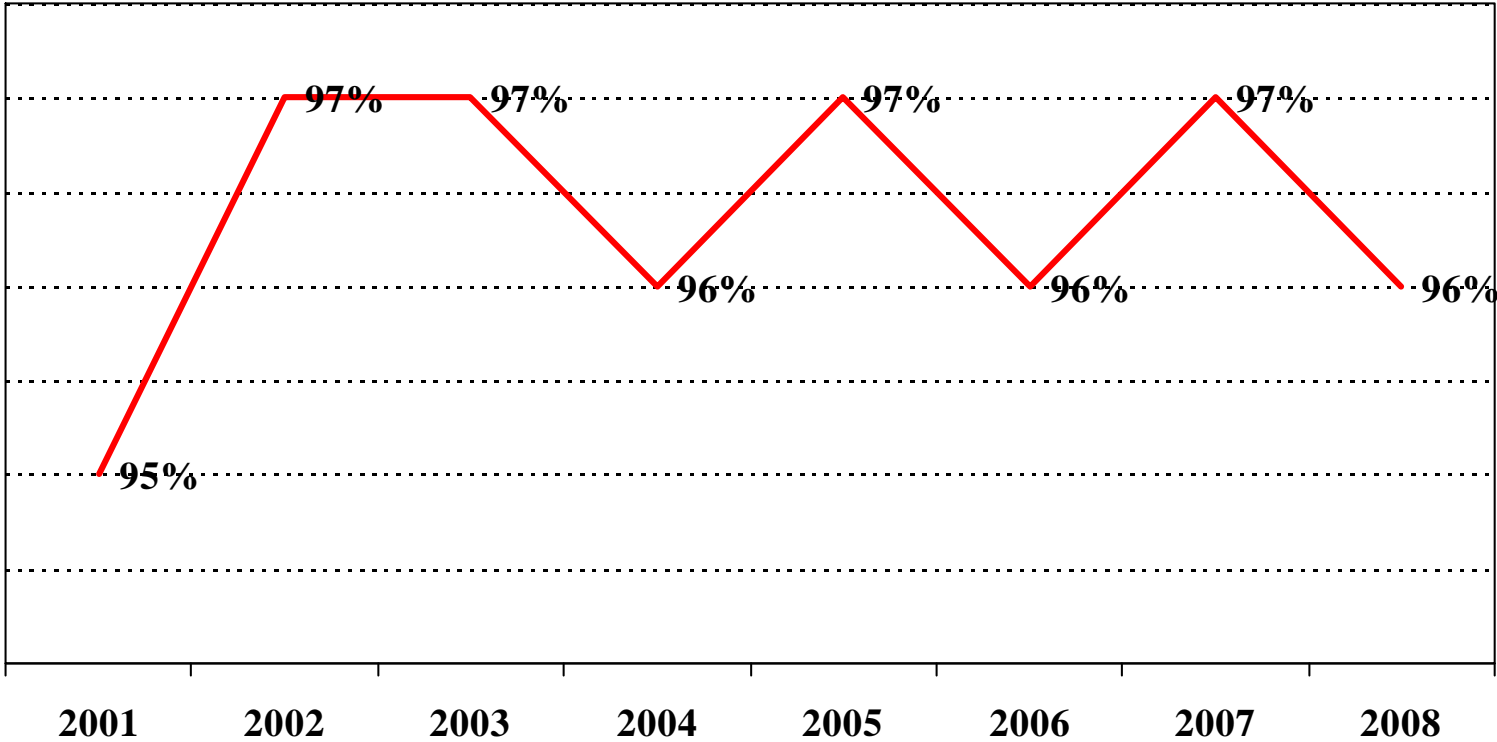
From Annual *MATC Graduate Employment Reports*. Corrections were made to 2001 data to assure consistency with state-reported numbers.

Race of FY2007 & FY2008 Graduates

Percentage among self-reporting Associate and Technical Diploma graduates

	<u>2007</u>	<u>2008</u>
• White	65%	64%
• African-American	20%	22%
• Hispanic	10%	10%
• Asian-American / Pac. Is.	4%	5%
• American Indian	1%	1%

Strong Graduate Satisfaction with Training



From Annual MATC Graduate Employment Reports

Top Employers of FY2008 Grads

Source: Annual Graduate Survey (based on the 60% who responded)

- Aurora Health Care
- Wheaton Franciscan Health Care
- Froedtert Memorial Hospital
- St. Luke's Medical Center
- St. Joseph's Regional Medical Center
- Pro Health Care
- Children's Hospital of Wisconsin
- Wisconsin City Municipalities
- Community Memorial Hospital
- Milwaukee County
- Waukesha Memorial Hospital
- United States Government
- Zablocki VA Medical Center
- Walgreen's
- Marshall & Ilsley Bank
- Northwestern Mutual Life
- Blood Center of Wisconsin
- Brookfield Rehabilitation & Specialty
- Elmbrook Memorial Hospital